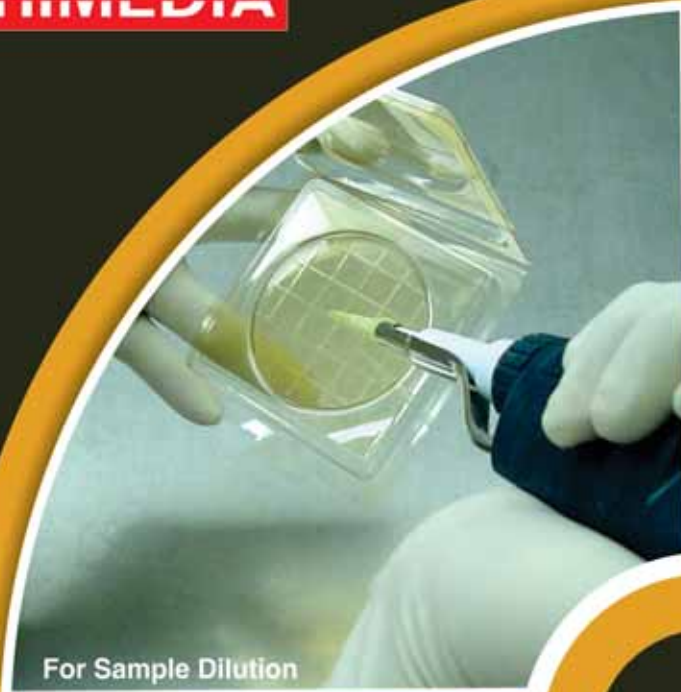


**HIMEDIA**®

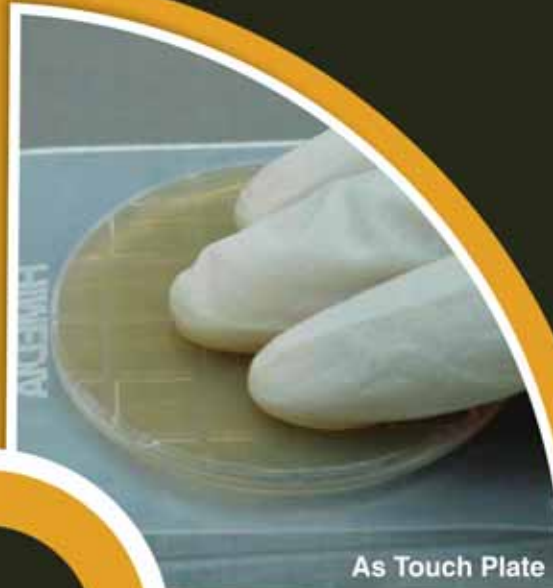
**HiTouch™ FlexiPlate™**

**S E R I E S**

Flexible Readymade Multifunctional Plates



For Sample Dilution



As Touch Plate

Your  
Hassle-Free  
Cost-effective  
choice



For Swabbing

55 mm Scored Plates,

**Also Available  
γ Irradiated, Triple Pack**

Ideal Choice of Food & Pharma  
Also recommended for  
water and environmental  
testing

HiMedia's handy, ready made touch plates  
For Surface monitoring in Meat, Fisheries, Food &  
Beverage Industries, Dairies, Hospitals,  
Biotechnology, Cell Culture, Pharmaceuticals  
& Cosmetics Environment

**Multifunctional Readymade Mini Plates**

**HiMedia Laboratories Pvt. Limited**

[www.himedialabs.com](http://www.himedialabs.com)

**HIMEDIA**®

For Life is Precious

Introducing  
**New**

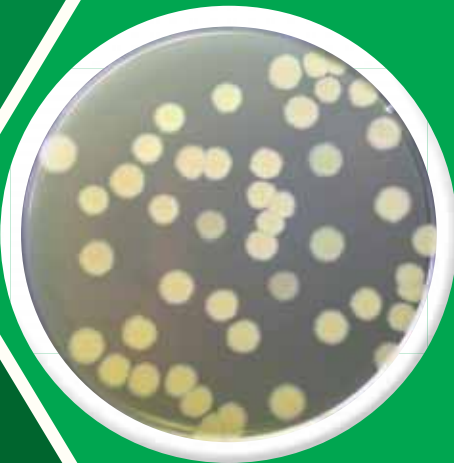
# REHYDRATION FLUID FOR GPT

Product Code : **LQ2541X**

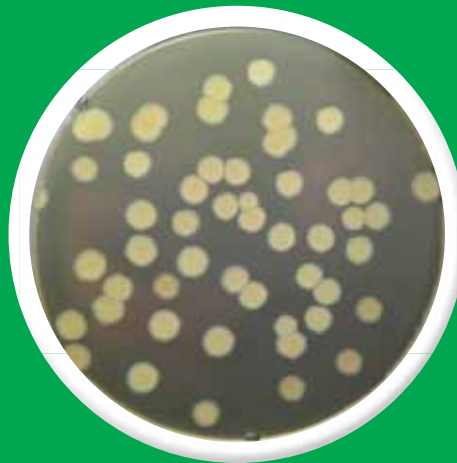
**MICROBIOLOGY PRODUCTS**

[www.himedialabs.com](http://www.himedialabs.com)

Reliable Rehydrating Fluid for Preparing Culture Dilutions and Suspensions for GPT



Day 1



Day 5



Day 10

*\* For E.coli ATCC 8739, stability has been observed for upto 10 days*



Growth Promotion Tests (GPT), described in various pharmacopoeias (USP, BP, JP, IP) is carried out to

- Determine suitability of test medium for growth of specified microorganisms
- By inoculating 10-100 cfu of recommended cultures and evaluating new lot with previously approved lot

Dilution methods for GPT are tedious while commercial cfu preparations are costly

To overcome these constraints, Ready to Use LQ2541X is developed which retains and enhances culture viability

- Culture preparations in this fluid can be stored upto 10 days
- Reduces overall time taken for inoculum preparation
- Overcomes tedious dilutions preparations
- Cost effective

*Ready to use HiTouch™ FlexiPlates™ for Coliforms, Staphylococci, Pseudomonas, Salmonella, Lactic acid bacteria, Yeasts and Moulds etc.*

**What are Flexi Plates ?**

HiTouch™ FlexiPlates™ are ready to use sterile media supplied in flexible disposable plates, 55 mm in diameter. It is grid scored on the base and is irradiated to ensure perfect sterility. Medium is filled aseptically and each plate is packed in pre-sterilized plastic bag. HiTouch™ FlexiPlate™ is then packed in plastic pouch wrapping. The unique flexible plate configuration ensures close contact even with uneven surfaces. These plates are specially developed for microbial testing, where not only counts are obtained (as on FL001, FL009, FL015, FL035, FL037) but it is also possible to select and differentiate between groups of microorganisms like coliforms (both *E. coli* and non *E. coli*), Staphylococci, Lactic acid bacteria, Listeria, Salmonella, *Ent. sakazaki*, yeasts and moulds (FL002 - FL008, FL010, FL014, FL016, FL017, FL022-FL024, FL030-FL034, FL036) and other microorganisms. The Flexiplate medium formula is suitable for optimal growth of environmental microorganisms and the grids enable direct reading on the plates of the number of colonies per cm<sup>2</sup>.  $\gamma$  irradiated Flexi Plate with neutralizers FL035G, FL039GT, FL041G & Flexi plate containing media with Lactamases as FL038, FL044 recommended for pharmaceutical use also fall in this range. Moreover the neutralizing agents in FL009, FL015, FL035 & FL044

inactivate any residual disinfectants <sup>(3,4,5)</sup> present on the surface of the medium to be tested :

The combination of lecithin and polysorbate 80 neutralizes quaternary ammonium compounds.

- Lecithin neutralizes chlorhexidine.
- Polysorbate 80 neutralizes hexachlorophene and mercurial compounds.

Chromogenic Flexi Plates FL042, FL043 & FL045 find specific use in detecting organisms from clinical, nonclinical & water samples (6).

**Where are Flexi plates used ?**

HiTouch™ FlexiPlates™ are recommended to check critical control points in protected areas while establishing or revising microbiological surface monitoring techniques and programmes in hospitals, pharma industry, food & water testing and other public services. Flexi Plates can be used to control air, notably using an atmospheric sample collector.

**How to use ?**

1. Open the pouch in the airlock entrance chamber of the protected area.
2. Remove the inner wrapping once in the protected area and read the instructions as specified on label before use. Samples must be collected on dry surfaces.
3. Apply the agar directly onto the surface to be tested ensuring that an even pressure of 25 gm/cm<sup>2</sup> is distributed over the whole plate for 10 seconds.
4. Replace the lid.
5. Clean the surface where the sample was collected in order to remove any possible traces of agar.
6. Incubate as recommended and enumerate the number of colonies. The mean surface area of the plate is 25 cm<sup>2</sup>.

**Interpretation of Results**

Interpretations can vary from one laboratory to another, and each laboratory must establish its own monitoring programme.

Classification of risk zones

Very low level of risk :	1
Medium level of risk:	2
High level of risk :	3
Very high level of risk :	4



Number of microorganisms on surfaces in contact with food	Interpretation <sup>(1,2)</sup>
< 1/cm <sup>2</sup>	Excellent
2 to 10/cm <sup>2</sup>	Good
11 to 100/cm <sup>2</sup>	Surface to be cleaned rapidly
> 101/cm <sup>2</sup>	Stop the production line and determine the cause of contamination

Examples of Interpretation according to the level of risk in the zone to be tested :

Level of Risk	No. of colonies per 25 cm <sup>2</sup> (*)	No. of colonies per 100 cm <sup>2</sup> (**)
4	< 5	< 10
3	< 5	< 100
2	< 50	< 1000
1	< 125	< 1000

Key : \* = "Guide de blonnetoyage."

Journal Officiel de la Republique Francaise.  
Recommandation NOE 1-90 (1991) <sup>(7)</sup>

\*\* = Draft European Standard prEN 1632-3 (1993).

### Limits of the Method

The level of microorganisms recovery varies according to the characteristics of the surfaces and its adhesive properties (rough or smooth surfaces). HiTouch™ FlexiPlate™ is a qualitative technique for the monitoring of surface biocontamination. Taking into account the inherent inaccuracy of biological collections, it is important to use the same method of collection for all samples.

### References

- Hall L., Hartnett M.J., Pub. (1964) Health Rep., 79, 1021.
- Pryor A.K., Mc Duff C.R., Exed Housekeeper. (1969) Mass.
- Lenette E.H., Spauldine E.H., Truant J.P. Manual of Clinical Microbiology, 2nd ed., (1974) American Society for Microbiology.
- Desbordes J., Biodegradation microbienne des antiseptiques et conservateurs. (1977) Rev. Institut Pasteur de Lyon, 10 (nO4), 291-311.
- Norme francaise NF T 72-151, Antiseptiques et desinfectants utilises a retat liquide, miscibles a reau (03/1981).
- International Organization for Standardization. ISO 9308-1:2014.
- "Guide du blonnetoyage". Journal Officiel de la Republique Francaise. Recommandation NOE 1-90 (1991).



### Recommended Test Procedures for Detection & Enumeration of Microorganisms\* using HiTouch™ FlexiPlates™

HiMedia's HiTouch™ FlexiPlates™ are specially developed for the microbial testing in food, pharmaceutical, cosmetic, dairy, hospitals, water works, environmental testing etc.



These plates are handy, ready to use, requires no preparation of media and helps to obtain exact number of microorganisms. These plates are very useful in detecting the presence of microorganisms by touching surfaces as well as by conventional inoculation methods as described below.

HiTouch™ FlexiPlates™ are securely fitted in a moulded base plate with an attached lid to maintain the sterility of the plate. The diameter of the prepared medium plate is 55 mm and the quantity of medium is 9 ml. The plates are scored to facilitate counting of the colonies.

#### Advantages

- No requirement of media preparation, sterilization etc.
- Saves time and labor
- Easy for enumeration, determines exact count of microorganisms
- Handy to use
- Occupies less storage space
- Direct enumeration from sample or surfaces
- No additional requirements of reagents

#### Multifunctional purposes

1. Contact plates/touch plates
2. Culture plates
3. Sample dilution plate
4. Swabbing plate
5. Gravitational settling plate

#### How to use as Touch Plates by contact method (i)

Open the lid and carefully lift up the enclosed prepared medium plate so as to avoid touching the agar surface by hand. Touch the surface of agar plate onto the surface to be tested. Gently press the plate manually for upto 10 seconds. Apply constant and uniform pressure to the whole surface. Replace exposed medium plate back in the base plate. Close the lid. Press the sides of the lid to make sure that it is fixed in the grooves. Disinfect the surface where the sample was taken in order to remove any possible traces of agar. Incubate the plates at specified temperature. After incubation as recommended count the number of colonies which have appeared on the surface of medium.

Recommended counting range for the flexiplates is 10-100 (CFU).The number of colonies from each

sample is expressed in colony forming units (CFU) extrapolated to 100 cm<sup>2</sup> of the surface sampled. According to the EU GMP Guide (1997) the values for microbiological monitoring in the operational state, for the manufacture of sterile product, the recommended limits are as follows :

**55 mm diameter scored Touch Plate**

Grade	CFU / Plate
A	<1
B	5
C	25
D	50

**Alternative Methods of Inoculation :**

**To use as Culture Plate (ii), Sample Dilution Plate (iii) or Swabbing Plate (iv)**

1. HiTouch FlexiPlates can be used for determination of microbial level in liquids and fluids by dropping of 0.01 ml of sample dilution onto the medium surface.



Sample dilution method

2. It is also possible to inoculate these plates by moistened swab after wiping off the sample area. In case of surface with heavy contamination / surfaces not suitable for contact plates, the swab-rinse method may be used, where the moistened swab after stroking the sample area is dipped in sterile saline and agitated. A specified amount i.e 0.01 ml of this rinse fluid or its dilution is dropped on the surface of flexiplates.



Moistened swab method

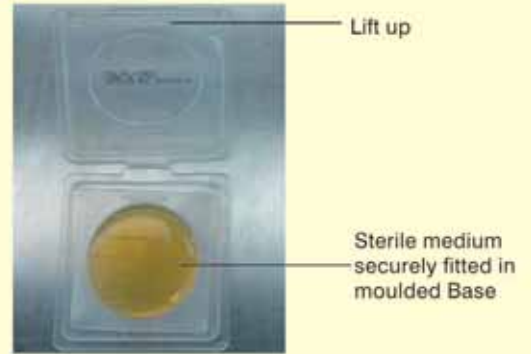
**To use as Gravitation Settling Plate (v)**

The flexiplates are also suitable for determination of airborne microorganisms in room air and other environments by gravitation settling of viable particles.

**FL009 HiTouch Enviromental Testing Flexi Plate**

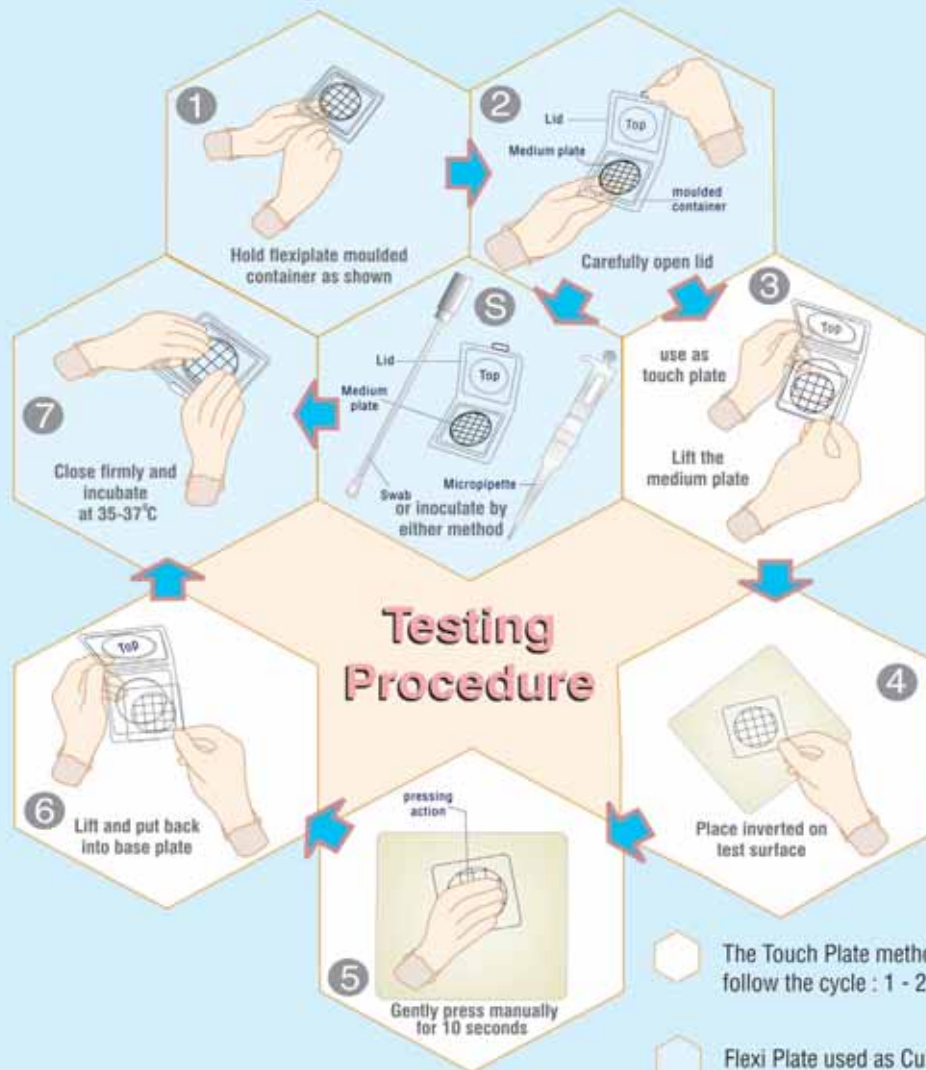


Flexi Plate medium enclosed in moulded cover



View of Flexi plate medium when opened

**Illustrative Diagram for recommended use of HiTouch™ Flexi Plates™**



**Testing Procedure**

The Touch Plate method would follow the cycle : 1 - 2 - 3 - 4 - 5 - 6 - 7

Flexi Plate used as Culture Plate, Sample Dilution Plate, Swabbing Plate or Gravitation Settling Plate would follow this cycle : 1 - 2 - S - 7



## HiTouch™ Aerobic Count FlexiPlate™ For enumeration of aerobic microorganisms

FL001

Medium used : HiTouch™ Aerobic Count Medium	
Composition **	
Ingredients	Grams/Litre
Tryptose	15.00
Soya peptone	5.00
Sodium chloride	5.00
Indicator dye	0.10
Agar	15.00

Final pH (at 25°C) 7.3 ± 0.2

\*\* Formula adjusted, standardized to suit performance parameters

### User Profile :

- ▶ Food & Dairy industries – raw materials, air & surface testing
- ▶ Poultry & Meat – raw materials, air & surface testing
- ▶ Pharmaceutical & Cosmetic industries – raw materials, air & surface testing
- ▶ Water & waste water – waste water testing laboratories
- ▶ Hospitals, operation – for air & surface testing theatres / I.C.U
- ▶ Other industries, laboratories where microbiological work is carried out

### Salient features :

- ▶ For detection and enumeration of aerobic microorganisms
- ▶ Red coloured colonies due to presence of an indicator dye
- ▶ Incubation temperature is 35 - 37°C
- ▶ Quick results within 18 - 24 hours

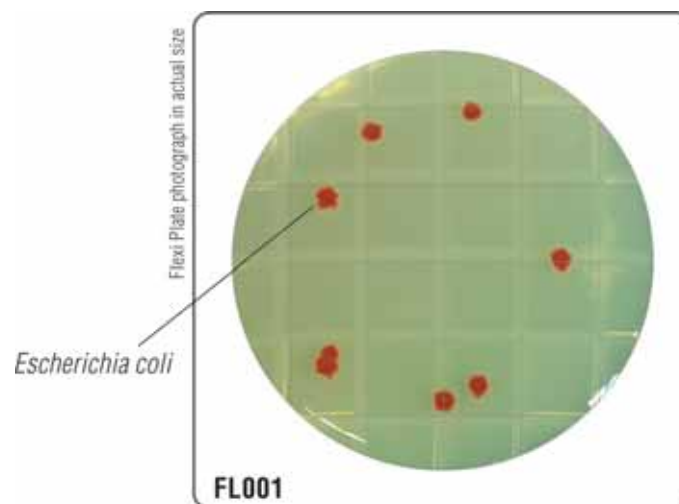
### Storage

On receipt store between 2-8°C. Use before expiry date on the label.

### Quality Control

- Appearance** : Sterile plastic plate containing light yellow coloured clear to slightly opalescent firm gel.
- Quantity of Medium** : 9 ml of gel in plastic plate.
- Reaction** : Reaction of the medium is pH 7.3 ± 0.2.
- Sterility Test** : Sterility of the medium was checked for 14 days. Medium was found sterile without any colony formation on surface of solid medium.
- Cultural Response** : Cultural characteristics observed after an incubation at 35-37°C for 18-24 hours.

Organisms (ATCC) (WDCM*)	Growth	Colour of Colony
<i>B. subtilis</i> (ATCC 6633) (00003*)	luxuriant	red to maroon
<i>E. coli</i> (ATCC 25922) (00013*)	luxuriant	red to maroon
<i>Ent. faecalis</i> (ATCC 29212) (00087*)	luxuriant	red to maroon
<i>S. aureus</i> (ATCC 25923) (00034*)	luxuriant	red to maroon
<i>S. pyogenes</i> (ATCC 19615)	luxuriant	red to maroon





## HiTouch™ E. coli / Coliform Count FlexiPlate™

For enumeration of all coliforms along with differential count of *E. coli*

FL002

Medium used : HiTouch™ *E.coli* / Coliform Count Medium

### Composition \*\*

Ingredients	Grams/Litre
Tryptose	14.00
Peptone special	5.00
Bile salts mixture	1.50
Disodium hydrogen phosphate	1.00
Sodium dihydrogen phosphate	0.60
Sodium chloride	2.40
Chromogen	0.075
Indicator dye	0.10
Agar	12.0

Final pH (at 25°C) 7.3 ± 0.2

\*\* Formula adjusted, standardized to suit performance parameters

### User Profile :

- ▶ Food and Dairy industries – raw materials, in process and finished products
- ▶ Pharmaceutical industry – raw materials and finished products
- ▶ Meat & Poultry – raw materials and meat products
- ▶ Water & waste water testing laboratories – waste water samples & recreational water where coliforms & differential count of *E. coli* is carried out
- ▶ Vaccine & toxin manufacturing – raw materials
- ▶ Other laboratories where microbiological work is carried out

### Salient features :

- ▶ For enumeration of coliforms along with differential count of *E. coli*
- ▶ Contains various selective agents, chromogenic compound & indicator dye which makes the medium selective and differential
- ▶ Coliforms ferment lactose, produce acid & gas, thus can be differentiated from non-lactose fermentors
- ▶ Covers all the important enteric bacteria like *Salmonella*, *Shigella*, *E. coli* etc
- ▶ Blue coloured colonies of *E. coli* & red coloured colonies of other coliforms observed due to presence of an indicator dye
- ▶ Incubation temperature is 44°C

- ▶ Confirmed results within 18 - 24 hours
- ▶ Count red colonies surrounded with yellow zone to get coliform count

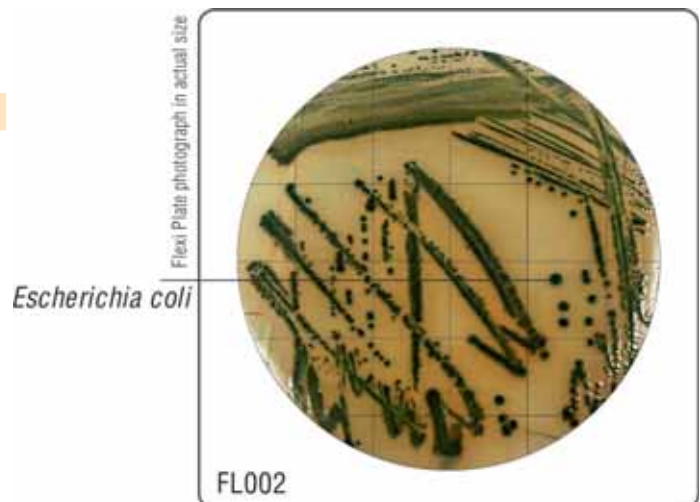
### Storage

On receipt store between 2-8°C. Use before expiry date on the label.

### Quality Control

- Appearance** : Sterile plastic plate containing light yellow coloured clear to slightly opalescent firm gel.
- Quantity of Medium** : 9 ml of gel in plastic plate.
- Reaction** : Reaction of the medium is pH 7.3 ± 0.2.
- Sterility Test** : Sterility of the medium was checked for 14 days. Medium was found sterile without any colony formation on surface of solid medium.
- Cultural Response** : Cultural characteristics observed after an incubation at 44°C for 18-24 hours.

Organisms (ATCC (WDCM*))	Growth	Colour of Colony
<i>E. coli</i> (ATCC 25922) (00013*)	luxuriant	bluish purple
<i>K. pneumoniae</i> (ATCC 13883) (00097*)	luxuriant	red to maroon
<i>S. aureus</i> (ATCC 25923) (00034*)	inhibited	-
<i>S. Enteritidis</i> (ATCC 13076) (00030*)	luxuriant	red to maroon



**HiTouch™ Coliform Count FlexiPlate™**  
For enumeration of coliform bacteria

**FL003**

**Medium used :** HiTouch™ Coliform Count Medium

**Composition \*\***

Ingredients	Grams/Litre
Peptone	7.00
Yeast extract	3.00
Lactose	10.00
Bile salts mixture	1.50
Sodium chloride	5.00
Indicator dye	0.03
Crystal violet	0.02
Agar	15.00

Final pH (at 25°C) 7.4 ± 0.2

\*\* Formula adjusted, standardized to suit performance parameters

**User Profile :**

- ▶ Cosmetic & Pharmaceutical industries - raw materials
- ▶ Food & dairy industries - raw materials, in process material and finished products
- ▶ Water & waste water testing laboratories - water samples for coliform detection
- ▶ Poultry & Meat industries - raw materials and meat products
- ▶ Other laboratories where microbiological work is carried out

**Salient features :**

- ▶ For enumeration of enterobacters & coliforms
- ▶ Contains bile nutrients along with a indicator dye which makes medium more selective
- ▶ *E. coli* forms red colonies with bile precipitation around it, which can be differentiated from other red coloured colonies of coliforms
- ▶ Differentiates coliforms from Enterobacters
- ▶ Coliforms ferment lactose which produce red colonies surrounded by red purple halo
- ▶ Lactose non fermentors & late lactose fermentors produce pale colonies
- ▶ Red coloured colonies with gas production give coli form count
- ▶ Incubation temperature is 35 - 37°C
- ▶ Confirmed results within 18 - 24 hours

**Storage**

On receipt store between 2-8°C. Use before expiry date on the label.

**Quality Control**

**Appearance :** Sterile plastic plate containing reddish pink coloured clear to slightly opalescent firm gel.

**Quantity of Medium :** 9 ml of gel in plastic plate.

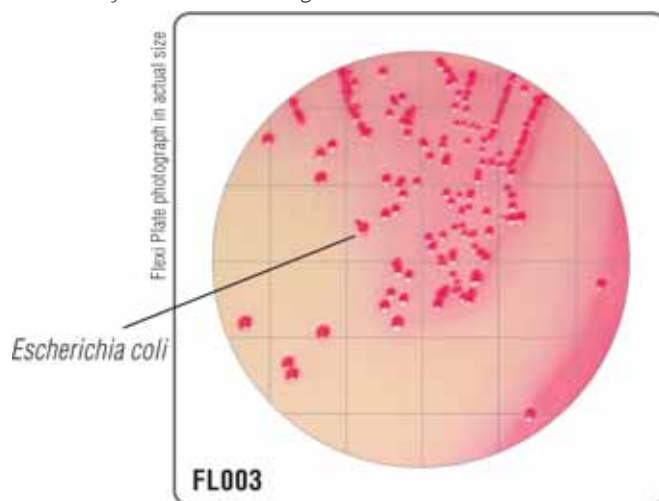
**Reaction :** Reaction of the medium is pH 7.4 ± 0.2.

**Sterility Test :** Sterility of the medium was checked for 14 days. Medium was found sterile without any colony formation on surface of solid medium.

**Cultural Response :** Cultural characteristics observed after an incubation at 35-37°C for 18 - 24 hours.

Organisms (ATCC) (WDCM*)	Growth	Colour of Colony
* <i>Kleb. aerogenes</i> (ATCC 13048) (00175*)	luxuriant	pink
<i>E. coli</i> (ATCC 25922) (00013*)	luxuriant	pinkish red with bile precipitate
<i>S. aureus</i> (ATCC 25923) (00034*)	inhibited	-
<i>S. Enteritidis</i> (ATCC 13076) (00030*)	luxuriant	colourless

# Formerly *Enterobacter aerogenes*



**HiTouch™ High Sensitivity Coliform Count FlexiPlate™**

For enumeration of coliform bacteria

**FL004**

**Medium used :** HiTouch™ High Sensitivity Coliform Count Medium

<b>Composition **</b>	
Ingredients	Grams/Litre
Biopeptone	5.00
Yeast extract	3.00
Lactose	10.00
D-Mannitol	5.00
Sodium chloride	7.50
Sodium lauryl sulphate	0.20
Sodium deoxycholate	0.10
Indicator dye	0.03
Agar	15.00

Final pH (at 25°C) 7.3 ± 0.2

\*\* Formula adjusted, standardized to suit performance parameters

**User Profile :**

- ▶ Water & waste water testing laboratories – water samples
- ▶ Food & Dairy industries – Inprocess material and finished products
- ▶ Cosmetics & Pharmaceutical industries – raw materials and finished products
- ▶ Meat & Poultry – raw materials and meat products
- ▶ Other laboratories where microbiological work is carried out

**Salient features :**

- ▶ For enumeration of faecal coliform bacteria
- ▶ Coliforms give pink coloured colonies due to presence of an indicator dye
- ▶ Medium contains selective agent which inhibits non-coliforms
- ▶ *E. coli* shows pink coloured colonies with bile precipitate around the colonies
- ▶ Incubation temperature is 41.5°C
- ▶ Results within 7 - 18 hours

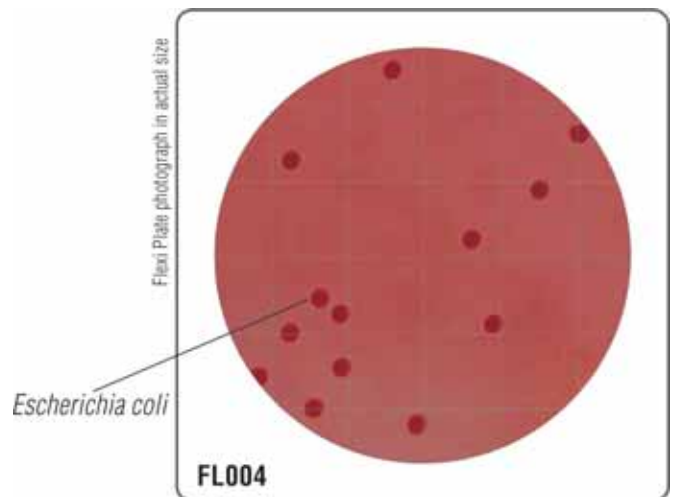
**Storage**

On receipt store between 2-8°C. Use before expiry date on the label.

**Quality Control**

- Appearance :** Sterile plastic plate containing pink coloured clear to slightly opalescent firm gel.
- Quantity of Medium :** 9 ml of gel in plastic plate.
- Reaction :** Reaction of the medium is pH 7.3 ± 0.2.
- Sterility Test :** Sterility of the medium was checked for 14 days. Medium was found sterile without any colony formation on surface of solid medium.
- Cultural Response :** Cultural characteristics observed after an incubation at 41.5°C for 7-18 hours.

Organisms (ATCC (WDCM*))	Growth	Colour of Colony
<i>E. coli</i> (ATCC 25922) (00013*)	luxuriant	pink with bile precipitate
<i>K. pneumoniae</i> (ATCC 13883) (00097*)	luxuriant	pink
<i>P. mirabilis</i> (ATCC 25933)	luxuriant	colourless
<i>S. aureus</i> (ATCC 25923) (00034*)	inhibited	-
<i>Ent. faecalis</i> (ATCC 19433) (00009*)	inhibited	-



## HiTouch™ Rapid Coliform Count FlexiPlate™

For enumeration of coliform bacteria

FL005

Medium used : HiTouch™ Rapid Coliform Count Medium

### Composition \*\*

Ingredients	Grams/Litre
Biopeptone	5.00
Yeast extract	3.00
Lactose	10.00
D-Mannitol	5.00
Sodium chloride	7.50
Sodium lauryl sulphate	0.20
Sodium deoxycholate	0.10
Indicator dye	0.65
Agar	15.00

Final pH (at 25°C) 7.2 ± 0.2

\*\* Formula adjusted, standardized to suit performance parameters

### User Profile :

- ▶ Water & waste - water samples water testing laboratories
- ▶ Food & Dairy industries - raw material, inprocess material and finished product
- ▶ Cosmetics & Pharmaceuticals industries - raw material, inprocess material & finished product
- ▶ Meat & Poultry - raw material & meat products
- ▶ Other laboratories where microbiological work is carried out

### Salient features :

- ▶ For enumeration of faecal coliform from non-faecal coliform
- ▶ *E. coli* gives yellow coloured colonies with yellow zone
- ▶ Medium contains selective agent which inhibits non-coliforms
- ▶ Incubation temperature is 41.5°C
- ▶ Results within 7 - 18 hours

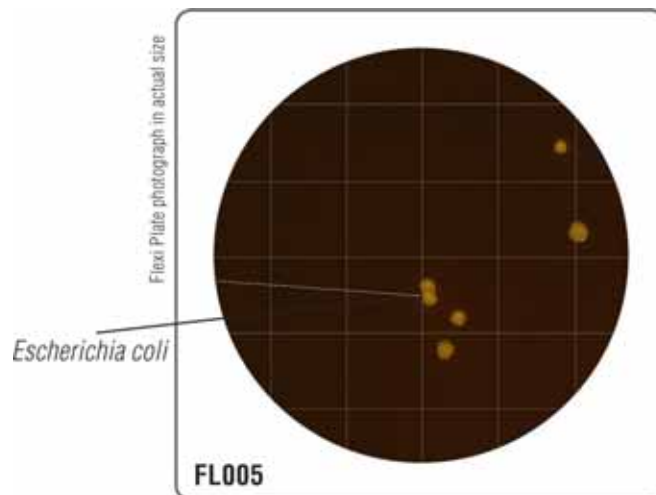
### Storage

On receipt store between 2-8°C. Use before expiry date on the label.

### Quality Control

- Appearance** : Sterile plastic plate containing deep pinkish purple coloured clear to slightly opalescent firm gel.
- Quantity of Medium** : 9 ml of gel in plastic plate
- Reaction** : Reaction of the medium is pH 7.2 ± 0.2.
- Sterility Test** : Sterility of the medium was checked for 14 days. Medium was found sterile without any colony formation on surface of solid medium.
- Cultural Response** : Cultural characteristics observed after incubation at 41.5°C for 7-18 hours.

Organisms (ATCC (WDCM*))	Growth	Colour of Colony
<i>E. coli</i> (ATCC 25922) (00013*)	luxuriant	Yellow with yellow zones
<i>S. aureus</i> (ATCC 25923) (00034*)	inhibited	-
<i>Ent. faecalis</i> (ATCC 29212) (00087*)	inhibited	-





## HiTouch™ Yeast and Mould Count FlexiPlate™

For enumeration of yeast & mould (fungal) population

FL006

**Medium used :** HiTouch™ Yeast and Mould Count Medium

### Composition \*\*

Ingredients	Grams/Litre
Potato infusion	200.00
Dextrose	20.00
Indicator dye	0.03
Agar	15.00

Final pH (at 25°C) 5.6 ± 0.2

\*\* Formula adjusted, standardized to suit performance parameters

### User Profile :

- ▶ Cosmetics & Pharmaceutical industries - for air & surface testing
- ▶ Food industry - for the total aerobic count from products & also for air & surface testing
- ▶ Water & waste water testing laboratories - for air & surface testing
- ▶ Meat & Poultry - for the total aerobic count from products & also for air & surface testing
- ▶ Hospital/Operation Theatre - for air & surface testing
- ▶ Other laboratories where microbiological work is carried out

### Salient features :

- ▶ For the enumeration of yeast and moulds from air & surface
- ▶ Pink to red coloured colonies observed due to the presence of an indicator dye
- ▶ Medium promotes ascospore production
- ▶ Acidic pH helps selective growth of yeast and moulds
- ▶ Incubation temperature is 22-28°C
- ▶ Results within 48 - 72 hours

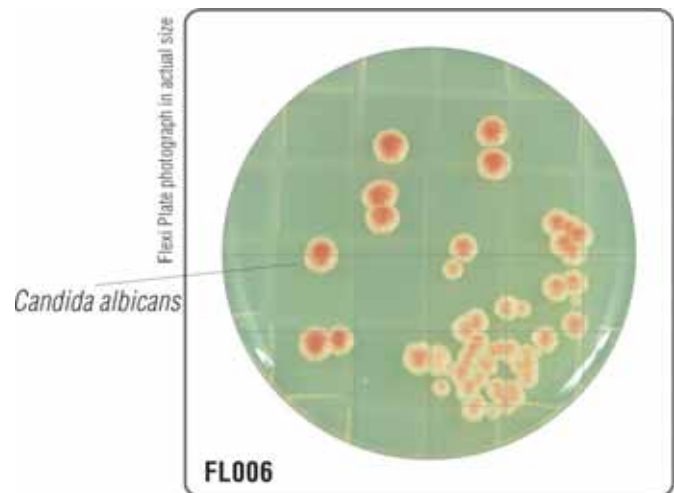
### Storage

On receipt store between 2-8°C. Use before expiry date on the label.

### Quality Control

- Appearance** : Sterile plastic plate containing light yellow coloured clear to slightly opalescent firm gel.
- Quantity of Medium** : 9 ml of gel in plastic plate.
- Reaction** : Reaction of the medium is pH 5.6 ± 0.2.
- Sterility Test** : Sterility of the medium was checked for 14 days. Medium was found sterile without any colony formation on surface of solid medium.
- Cultural Response** : Cultural characteristics observed after an incubation at 22-28°C for 48-72 hours.

Organisms (ATCC) (WDCM*)	Growth	Colour of Colony
<i>C. albicans</i> (ATCC 10231) (00054*)	luxuriant	pinkish white
<i>S. cerevisiae</i> (ATCC 9763) (00058*)	luxuriant	pinkish white



**HiTouch™ Rapid *S. aureus* Count FlexiPlate™**

For enumeration of *S. aureus*

**FL007**

Medium used : HiTouch™ Rapid *S. aureus* Count Medium

Composition **	
Ingredients	Grams/Litre
Proteose peptone	10.00
HM Peptone B #	1.00
Sodium chloride	75.00
D-Mannitol	10.00
Indicator dye	0.025
Agar	15.00

Final pH (at 25°C) 7.4 ± 0.2

\*\* Formula adjusted, standardized to suit performance parameters

# Equivalet to Beef extract

**User Profile :**

- ▶ Food & Dairy industries - raw material, inprocess material and finished product
- ▶ Meat & Poultry - raw material and meat products
- ▶ Cosmetic & Pharmaceutical industries - raw material & finished product
- ▶ Water & waste water testing laboratories - recreational water samples
- ▶ Hospital/Operation Theatre - surface and instruments testing in hospitals
- ▶ Other laboratories where microbiological work is carried out

**Salient features :**

- ▶ For enumeration of *S. aureus*
- ▶ Detects specifically coagulase positive *S. aureus*
- ▶ *S. aureus* are seen by yellow colonies with yellow zone
- ▶ Incubation temperature is 35 - 37°C
- ▶ Rapid results within 18 - 48 hours

**Storage**

On receipt store between 2-8°C. Use before expiry date on the label.

**Quality Control**

**Appearance** : Sterile plastic plate containing red coloured clear to slightly opalescent firm gel

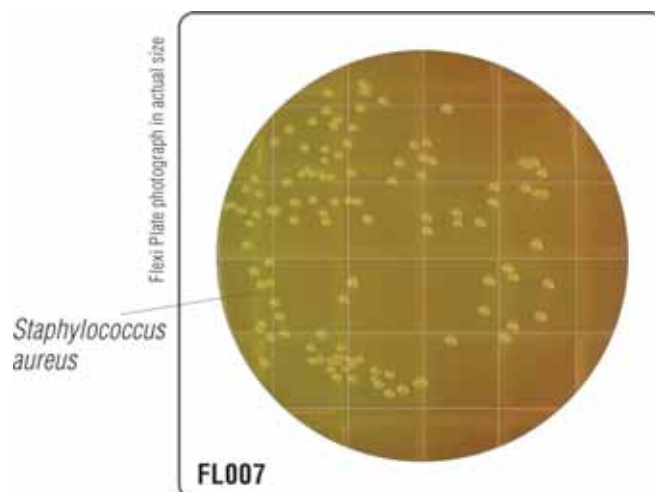
**Quantity of Medium** : 9 ml of gel in plastic plate.

**Reaction** : Reaction of the medium is pH 7.4 ± 0.2.

**Sterility Test** : Sterility of the medium was checked for 14 days. Medium was found sterile without any colony formation on surface of solid medium.

**Cultural Response** : Cultural characteristics observed after an incubation at 35 - 37°C for 18-48 hours.

Organisms (ATCC (WDCM*))	Growth	Colour of Colony
<i>E. coli</i> (ATCC 25922) (00013*)	inhibited	-
<i>S. aureus</i> (ATCC 25923) (00034*)	good - luxuriant	yellow
<i>S. epidermidis</i> (ATCC 12228) (00036*)	fair-good	red



**HiTouch™ Lactic Acid Count FlexiPlate™**

For enumeration of lactic acid bacteria

**FL008**

Medium used : HiTouch™ Lactic Acid Count Medium

**Composition \*\***

Ingredients	Grams/Litre
Proteose peptone	10.00
HM Peptone B#	10.00
Yeast extract	5.00
Dextrose	20.00
Polysorbate 80	1.00
Ammonium citrate	2.00
Sodium acetate	5.00
Inorganic salts	0.15
Dipotassium hydrogen phosphate	2.00
Agar	12.00

Final pH (at 25°C) 6.5 ± 0.2

\*\* Formula adjusted, standardized to suit performance parameters

# Equivalet to Beef extract

**User Profile :**

- ▶ Food industry - inprocess material and finished product
- ▶ Meat - raw material and meat products
- ▶ Dairy industry - milk products & processed products

**Salient features :**

- ▶ For easy enumeration of acid producing bacteria
- ▶ Essential nutrients in this medium facilitates the growth of Lactobacilli
- ▶ Incubate at 35 - 37°C
- ▶ Results within 18 - 48 hours

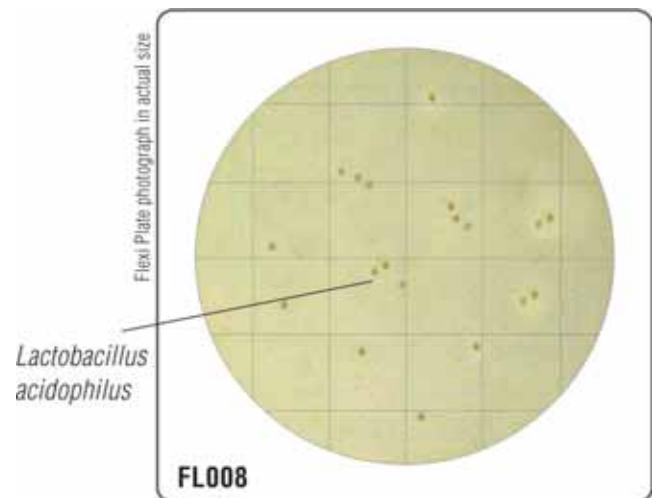
**Storage**

On receipt store between 2-8°C. Use before expiry date on the label.

**Quality Control**

- Appearance** : Sterile Plastic plate containing medium amber coloured clear to slightly opalescent firm gel.
- Quantity of Medium** : 9 ml of gel in plastic plate.
- Reaction** : Reaction of the medium is pH 6.5 ± 0.2.
- Sterility Test** : Sterility of the medium was checked for 14 days. Medium was found sterile without any colony formation on surface of solid medium.
- Cultural Response** : Cultural characteristics observed after an incubation at 35-37°C for 18-48 hours.

Organisms (ATCC)	Growth
<i>L. acidophilus</i> (ATCC 19992)	luxuriant
<i>L. fermentum</i> (ATCC 9338)	luxuriant
<i>L. plantarum</i> (ATCC 8014)	luxuriant



## HiTouch™ Environmental Testing FlexiPlate™

For enumeration of environmental organisms

FL009

Medium used : HiTouch™ Environmental Testing Medium

### Composition \*\*

Ingredients	Grams/Litre
Peptone special	23.00
Yeast extract	2.00
Sodium chloride	5.00
Lecithin	1.00
Polysorbate 80 (Tween 80)	7.00
Dextrose	1.00
Sodium bisulphite	0.10
Indicator dye	0.10
Agar	15.00

Final pH (at 25°C) 7.2 ± 0.2

\*\* Formula adjusted, standardized to suit performance parameters

### User Profile :

- ▶ Food & Dairy industries - for environmental count
- ▶ Cosmetic & Pharmaceutical industries - for environmental count
- ▶ Meat & Poultry - for environmental count
- ▶ Vaccine & Antibiotic production - for environmental count
- ▶ Other laboratories where environmental count of microorganisms is essential

### Salient features :

- ▶ Contains essential nutrients which support growth of a number of organisms
- ▶ Presence of lecithin & polysorbate 80 helps to recover microorganisms from surfaces with residues of disinfectant
- ▶ Pink to red coloured colonies appear because of indicator dye
- ▶ Incubation temperature is 35 - 37°C
- ▶ Confirmed results within 18 - 48 hours

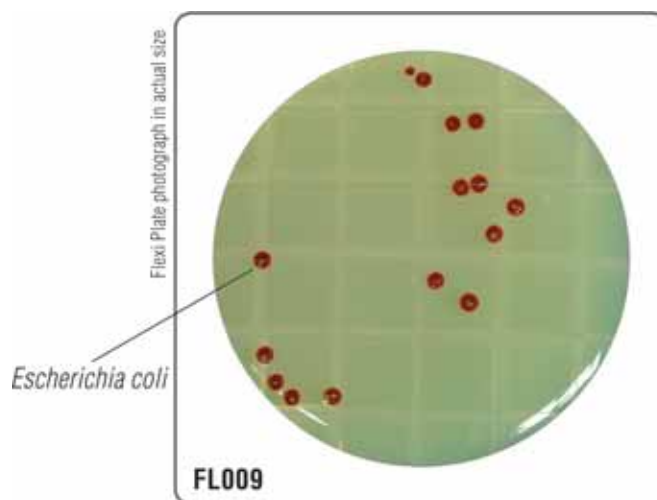
### Storage

On receipt store between 2-8°C. Use before expiry date on the label.

### Quality Control

- Appearance** : Sterile Plastic plate containing yellow coloured clear to slightly opalescent firm gel.
- Quantity of Medium** : 9 ml of gel in plastic plate.
- Reaction** : Reaction of the medium is pH 7.2 ± 0.2.
- Sterility Test** : Sterility of the medium was checked for 14 days. Medium was found sterile without any colony formation on surface of solid medium.
- Cultural Response** : Cultural characteristics observed after an incubation at 35-37°C for 18-48 hours.

Organisms (ATCC (WDCM*))	Growth	Colour of Colony
<i>E. coli</i> (ATCC 25922) (00013*)	luxuriant	pink to red
<i>S. aureus</i> (ATCC 25923) (00034*)	luxuriant	pink to red





**HiTouch™ Environmental Testing FlexiPlate™** (γ irradiated)

For enumeration of environmental organisms

**FL009G**

**Medium used :** HiTouch™ Environmental Testing Medium

<b>Composition **</b>	
Ingredients	Grams/Litre
Peptone special	23.00
Yeast extract	2.00
Sodium chloride	5.00
Lecithin	1.00
Polysorbate 80 (Tween 80)	7.00
Dextrose	1.00
Sodium bisulphite	0.10
Indicator dye	0.10
Agar	15.00

Final pH (at 25°C) 7.2 ± 0.2

\*\* Formula adjusted, standardized to suit performance parameters

**User Profile :**

- ▶ Food & Dairy industries - for environmental count
- ▶ Cosmetic & Pharmaceutical industries - for environmental count
- ▶ Meat & Poultry - for environmental count
- ▶ Vaccine & Antibiotic production - for environmental count
- ▶ Other laboratories where environmental count of microorganisms is essential

**Salient features :**

- ▶ Contains essential nutrients which support growth of a number of organisms
- ▶ Presence of lecithin & polysorbate 80 helps to recover microorganisms from surfaces with residues of disinfectant
- ▶ Pink to red coloured colonies appear because of indicator dye
- ▶ Incubation temperature is 35 - 37°C
- ▶ Confirmed results within 18 - 48 hours

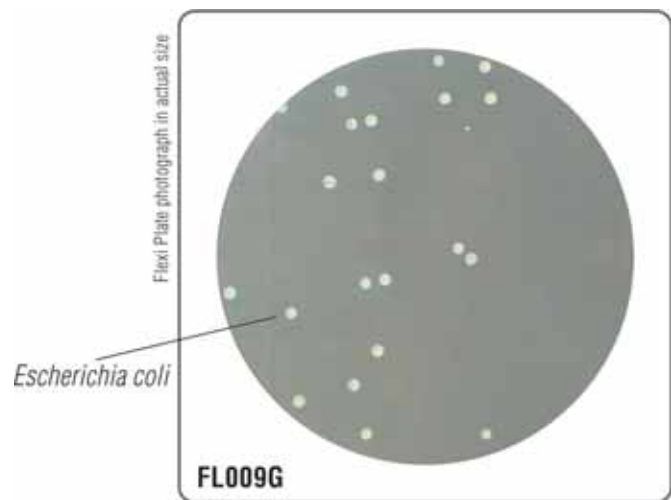
**Storage**

On receipt store between 2-8°C. Use before expiry date on the label.

**Quality Control**

- Appearance** : Sterile Plastic plate containing yellow coloured clear to slightly opalescent firm gel.
- Quantity of Medium** : 9 ml of gel in plastic plate.
- Reaction** : Reaction of the medium is pH 7.2 ± 0.2.
- Sterility Test** : Sterility of the medium was checked for 14 days. Medium was found sterile without any colony formation on surface of solid medium.
- Cultural Response** : Cultural characteristics observed after an incubation at 35-37°C for 18-48 hours.

Organisms (ATCC) (WDCM*)	Growth
<i>E. coli</i> (ATCC 25922) (00013*)	luxuriant
<i>S. aureus</i> (ATCC 25923) (00034*)	luxuriant



**HiTouch™ Selective Yeast and Mould Count FlexiPlate™**

For enumeration of yeasts & moulds

**FL010**

Medium used : HiTouch™ Selective Yeast and Mould Count Medium

**Composition \*\***

Ingredients	Grams/Litre
Biopeptone	10.00
Yeast extract	9.00
Dextrose	50.00
Magnesium sulphate	2.10
Potassium phosphate	2.00
Diastase	0.05
Thiamine hydrochloride	0.05
Indicator dye	0.026
Agar	15.00

Final pH (at 25°C) 4.6 ± 0.2

\*\* Formula adjusted, standardized to suit performance parameters

**User Profile :**

- ▶ Cosmetics & Pharmaceutical industries - raw materials, inprocess and finished products
- ▶ Veterinary & Vaccine - for environmental testing
- ▶ Agriculture - raw material, soil samples
- ▶ Food & Dairy industries - raw material, inprocess and processed food products
- ▶ Beverage industry - raw material and environmental testing
- ▶ Other laboratories where microbiological work is carried out

**Salient features :**

- ▶ For enumeration of yeast and mould from environment
- ▶ Contains essential nutrients and acidic pH which help in the fast growth of yeast and mould
- ▶ Incubation temperature is 22-28°C
- ▶ Confirmed results within 48 - 72 hours

**Storage**

On receipt store between 2-8°C. Use before expiry date on the label.

**Quality Control**

**Appearance** : Sterile plastic plate containing green coloured clear to slightly opalescent firm gel.

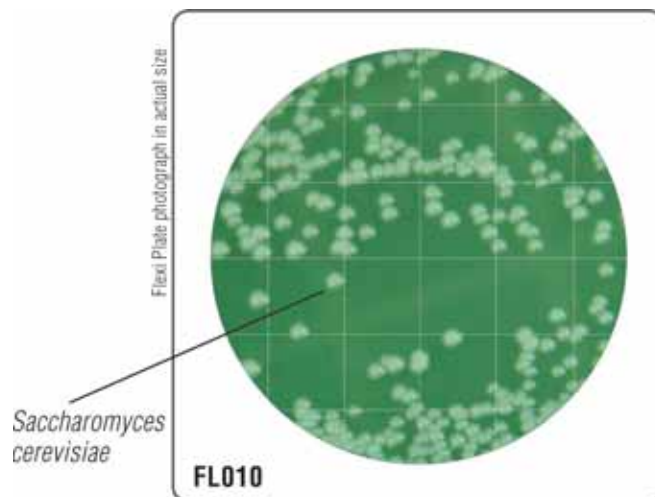
**Quantity of Medium** : 9 ml of gel in plastic plate.

**Reaction** : Reaction of the medium is pH 4.6 ± 0.2.

**Sterility Test** : Sterility of the medium was checked for 14 days. Medium was found sterile without any colony formation on surface of solid medium.

**Cultural Response** : Cultural characteristics observed after incubation at 22 - 28°C for 48 - 72 hours.

Organisms (ATCC) (WDCM*)	Growth	Colour of Colony
<i>C. albicans</i> (ATCC 10231) (00054*)	luxuriant	greenish white
<i>S. cerevisiae</i> (ATCC 9763) (00058*)	good - luxuriant	greenish white



**HiTouch™ FlexiPlate™ - SB**  
For enumeration of yeasts and moulds

**FL011**

Medium used : HiTouch™ Modified Sabouraud Count Medium

**Composition \*\***

Ingredients	Grams/Litre
Mycological peptone	10.00
Dextrose	40.00
Agar	15.00

Final pH (at 25°C) 5.6 ± 0.2

\*\* Formula adjusted, standardized to suit performance parameters

**User Profile :**

- ▶ Cosmetics industry - raw materials
- ▶ Veterinary - products for veterinary inprocess testing material
- ▶ Water & waste water testing laboratories - recreational water
- ▶ Food industry - food products and also for air & surface testing
- ▶ Pharmaceutical industry - inprocess and finished products
- ▶ Meat & Poultry - raw materials, meat products

**Salient features :**

- ▶ For detection of aerobic pathogenic fungi which may produce infective spores
- ▶ Incubation temperature is 22-28°C
- ▶ Confirmed results within 40 - 48 hours

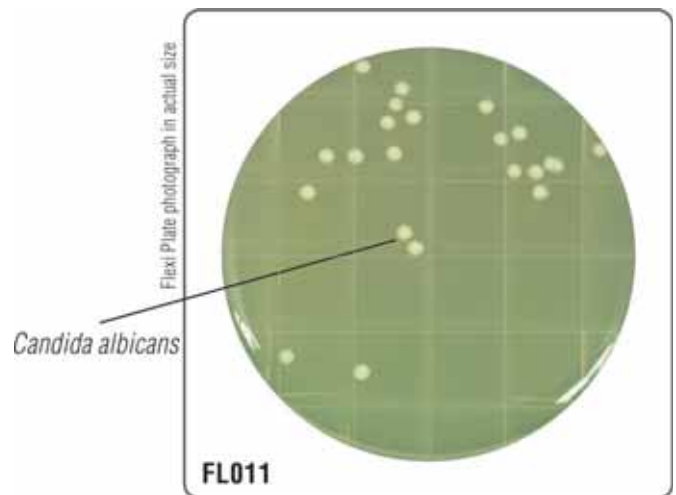
**Storage**

On receipt store between 2-8°C. Use before expiry date on the label.

**Quality Control**

- Appearance** : Sterile plastic plate containing light yellow coloured clear to slightly opalescent firm gel.
- Quantity of Medium** : 9 ml of gel in plastic plate.
- Reaction** : Reaction of the medium is pH 5.6 ± 0.2.
- Sterility Test** : Sterility of the medium was checked for 14 days. Medium was found sterile without any colony formation on surface of solid medium.
- Cultural Response** : Cultural characteristics observed after an incubation at 22 - 28°C for 40-48 hours.

Organisms (ATCC) (WDCM*)	Growth	Colour of Colony
<i>C. albicans</i> (ATCC 10231) (00054*)	luxuriant	white
<i>S. cerevisiae</i> (ATCC 9763) (00058*)	luxuriant	white
<i>E. coli</i> (ATCC 25922) (00013*)	inhibited	-



**HiTouch™ FlexiPlate™ - VJ**  
For enumeration of *Staphylococcus aureus*

**FL012**

Medium used : HiTouch™ Selective *S. aureus* Count Medium

Composition **	
Ingredients	Grams/Litre
Peptone special	15.00
Mannitol	10.00
Dipotassium hydrogen phosphate	5.00
Lithium chloride	5.00
Glycine	10.00
Indicator dye	0.025
Agar	16.00

Final pH (at 25°C) 7.2 ± 0.2

\*\* Formula adjusted, standardized to suit performance parameters

**User Profile :**

- ▶ Cosmetics Industry - raw materials
- ▶ Food industry - for specific *S. aureus* counts from in process and finished products
- ▶ Dairy industry - raw materials
- ▶ Meat - raw materials/meat products
- ▶ Poultry - raw material
- ▶ Other industries where microbiological analysis is required

**Salient features :**

- ▶ For enumeration of *Staphylococci* in heavily contaminated foods and clinical specimens
- ▶ Detects coagulase positive & mannitol positive colonies of *Staphylococcus aureus*
- ▶ High glycine content and Lithium chloride inhibits contaminants.
- ▶ *S. aureus* growth appears as black colonies with yellow halo
- ▶ Incubation temperature is 35 - 37°C
- ▶ Confirmed identification within 18-24 hours

**Storage**

On receipt store between 2-8°C. Use before expiry date on the label.

**Quality Control**

**Appearance** : Sterile Plastic plate containing reddish pink coloured clear to slightly opalescent firm gel.

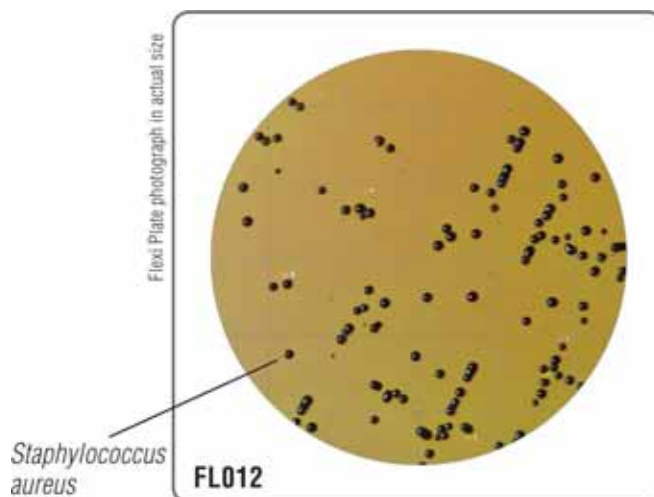
**Quantity of Medium** : 9 ml of gel in plastic plate.

**Reaction** : Reaction of the medium is pH 7.2 ± 0.2.

**Sterility Test** : Sterility of the medium was checked for 14 days. Medium was found sterile without any colony formation on surface of solid medium.

**Cultural Response** : Cultural characteristics observed after an incubation at 35 - 37°C for 18-24 hours.

Organisms (ATCC) (WDCM*)	Growth	Colour of Colony
<i>E. coli</i> (ATCC 25922) (00013*)	inhibited	-
<i>S. aureus</i> (ATCC 25923) (00034*)	luxuriant	black with yellow halo
<i>S. epidermidis</i> (ATCC 12228) (00036*)	fair	translucent to blackish





## HiTouch™ FlexiPlate™ - VR

For enumeration of *Enterobacteriaceae*

FL013

Medium used : HiTouch™ *Enterobacteriaceae* Count Medium

### Composition \*\*

Ingredients	Grams/Litre
Biopeptone	10.00
Lactose	10.00
Bile salts	1.50
Sodium chloride	5.00
Indicator mixture	0.032
Agar	15.00

Final pH (at 25°C) 7.4 ± 0.2

\*\* Formula adjusted, standardized to suit performance parameters

### User Profile :

- ▶ Food industry - for Enterobacter enumeration, for inprocess materials & processed foods
- ▶ Veterinary - raw materials
- ▶ Water and waste water testing laboratories - for detection of Enterobacters in water and waste water
- ▶ Dairy industry - raw material
- ▶ Other industries/laboratories where microbiological work is carried out

### Salient features :

- ▶ For enumeration of *Enterobacteriaceae* in raw foods
- ▶ The colonies will appear pink because of an indicator dye
- ▶ Contains Bile salts & crystal violet which enhances the growth of gram-negative intestinal bacteria and inhibiting gram- positive microbes
- ▶ Count the pink colonies to get coliform count
- ▶ Covers all *Enterobacteriaceae* species
- ▶ Incubation temperature is 35-37°C
- ▶ Results within 18 - 24 hours

### Storage

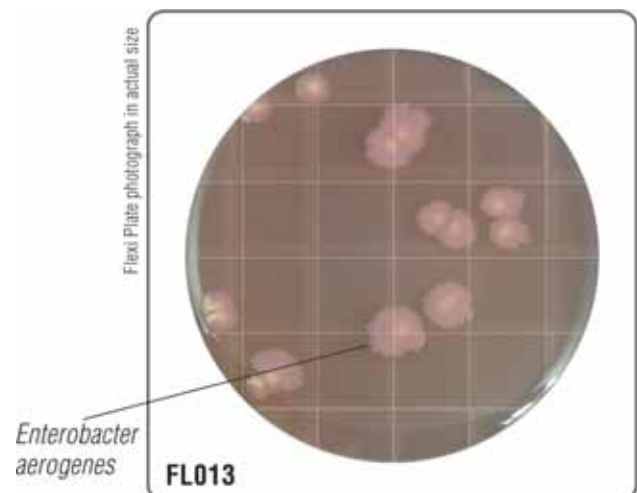
On receipt store between 2-8°C. Use before expiry date on the label.

### Quality Control

- Appearance** : Sterile Plastic plate containing reddish pink coloured clear to slightly opalescent firm gel.
- Quantity of Medium** : 9 ml of gel in plastic plate.
- Reaction** : Reaction of the medium is pH 7.4 ± 0.2.
- Sterility Test** : Sterility of the medium was checked for 14 days. Medium was found sterile without any colony formation on surface of solid medium.
- Cultural Response** : Cultural characteristics observed after an incubation at 35-37°C for 18-24 hours.

Organisms (ATCC) (WDCM*)	Growth	Colour of Colony
# <i>Kleb. aerogenes</i> (ATCC 13048) (00175*)	luxuriant	pink-red
<i>E. coli</i> (ATCC 25922) (00013*)	luxuriant	pink-red with bile precipitate
<i>S. aureus</i> (ATCC 25923) (00034*)	inhibited	-
<i>S. Enteritidis</i> (ATCC 13076) (00030*)	luxuriant	colourless

# Formerly *Enterobacter aerogenes*



## HiTouch™ FlexiPlate™ - CT

For enumeration of *Pseudomonas aeruginosa*

FL014

Medium used : HiTouch™ *Pseudomonas aeruginosa* Count Medium

### Composition \*\*

Ingredients	Grams/Litre
Gelatin Peptone	20.00
Inorganic salts	11.40
Cetrimide	0.30
Agar	16.00

Final pH (at 25°C) 7.2 ± 0.2

\*\* Formula adjusted, standardized to suit performance parameters

### User Profile :

- ▶ Cosmetic industry - raw materials
- ▶ Vaccine manufacturing - raw materials
- ▶ Pharmaceutical industry - raw materials and finished products
- ▶ Other industries & Pathological laboratories where microbiological work is carried out.

### Salient features :

- ▶ For the enumeration of *Pseudomonas aeruginosa*
- ▶ *Pseudomonas aeruginosa* will appear as pigmented blue, blue green or non-pigmented colony
- ▶ Incubation temperature is 35 - 37°C
- ▶ Confirmed results within 18-24 hours

### Storage

On receipt store between 2-8°C. Use before expiry date on the label.

### Quality Control

**Appearance** : Sterile plastic plate containing light yellow coloured clear to slightly opalescent firm gel.

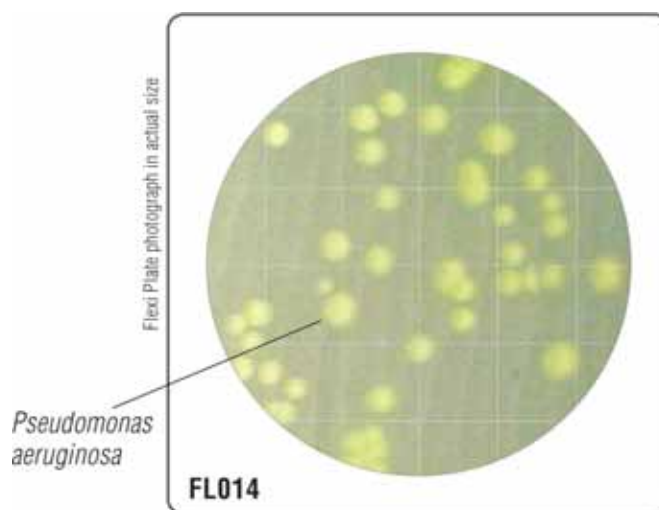
**Quantity of Medium** : 9 ml of gel in plastic plate.

**Reaction** : Reaction of the medium is pH 7.2 ± 0.2.

**Sterility Test** : Sterility of the medium was checked for 14 days. Medium was found sterile without any colony formation on surface of solid medium.

**Cultural Response** : Cultural characteristics observed after an incubation at 35-37°C for 18-24 hours.

Organisms (ATCC) (WDCM*)	Growth
<i>Ps. aeruginosa</i> (ATCC 27853) (00025*)	luxuriant (Colourless to green)
<i>E. coli</i> (ATCC 25922) (00013*)	inhibited
<i>Stenotrophomonas maltophilia</i> (ATCC 13637)	inhibited
<i>S. aureus</i> (ATCC 25923) (00034*)	inhibited



**HiTouch™ FlexiPlate™ - DA**

For determining bactericidal activity of disinfectants

**FL015**

**Medium used :** HiTouch™ Selective Environment Count Medium

**Composition \*\***

Ingredients	Grams/Litre
Peptone, special	7.50
Dextrose	2.50
Neutralizing agents	9.50
Lecithin	7.00
Polysorbate 80	5.00
Indicator dye	0.02
Agar	15.00

Final pH (at 25°C) 7.6 ± 0.2

\*\* Formula adjusted, standardized to suit performance parameters

**User Profile :**

- ▶ Environment - water & waste water analysis
- ▶ Sanitary testing - disinfectant & surface testing

**Salient features :**

- ▶ To enumerate organism from environment and to neutralise antiseptics & disinfectants
- ▶ Bacterial growth observed as yellow colonies due to the presence of an indicator dye
- ▶ Gives total bacterial count of the samples analysed
- ▶ Incubation temperature is 35 - 37°C
- ▶ Confirmed results within 18 - 24 hours

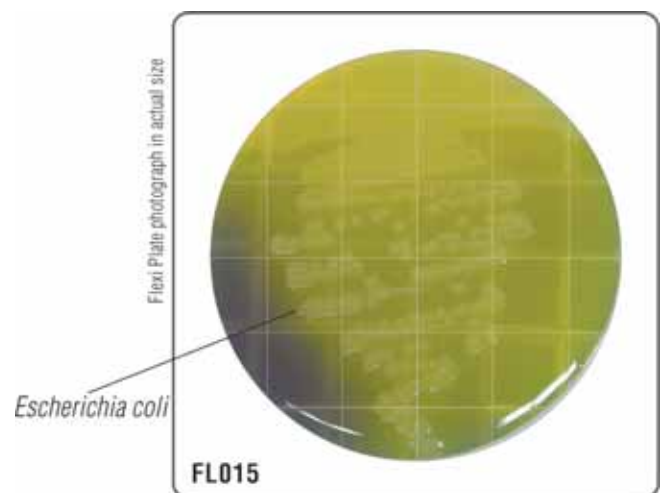
**Storage**

On receipt store between 2-8°C. Use before expiry date on the label.

**Quality Control**

- Appearance** : Sterile Plastic plate containing purple coloured clear to slightly opalescent firm gel.
- Quantity of Medium** : 9 ml of gel in plastic plate.
- Reaction** : Reaction of the medium is pH 7.6 ± 0.2.
- Sterility Test** : Sterility of the medium was checked for 14 days. Medium was found sterile without any colony formation on surface of solid medium.
- Cultural Response** : Cultural characteristics observed after an incubation at 35 -37°C for 18 - 24 hours.

Organisms (ATCC) (WDCM*)	Growth
<i>B. subtilis</i> (ATCC 6633) (00003*)	luxuriant
<i>E. coli</i> (ATCC 25922) (00013*)	luxuriant
<i>S. aureus</i> (ATCC 25923) (00034*)	luxuriant



**HiTouch™ FlexiPlate™ - Bacillus Counts**

For enumeration of *Bacillus* species

**FL016**

**Medium used :** HiTouch™ Selective *Bacillus* Count Medium

**Composition \*\***

Ingredients	Grams/Litre
Biopeptone	6.50
Yeast extract	1.50
Sodium chloride	5.00
Agar	15.00

Final pH (at 25°C) 7.4 ± 0.2

\*\* Formula adjusted, standardized to suit performance parameters

**User Profile :**

- ▶ Dairy industry - finished products
- ▶ Poultry & Meat - raw materials
- ▶ Food industry - raw materials & processed foods
- ▶ Pharmaceutical industry - inprocess material and finished products
- ▶ Water and waste water testing laboratories - water, waste water samples, recreational water
- ▶ Other labs/industries where microbiological work is carried out

**Salient features :**

- ▶ For enumeration of *Bacillus* species from various samples
- ▶ Presence of nutritious substrates enhances the growth of *Bacillus*
- ▶ Incubation temperature is 35 - 37°C
- ▶ Confirmed results within 16 - 18 hours

**Storage**

On receipt store between 2-8°C. Use before expiry date on the label.

**Quality Control**

**Appearance** : Sterile plastic plate containing light amber coloured clear to slightly opalescent firm gel.

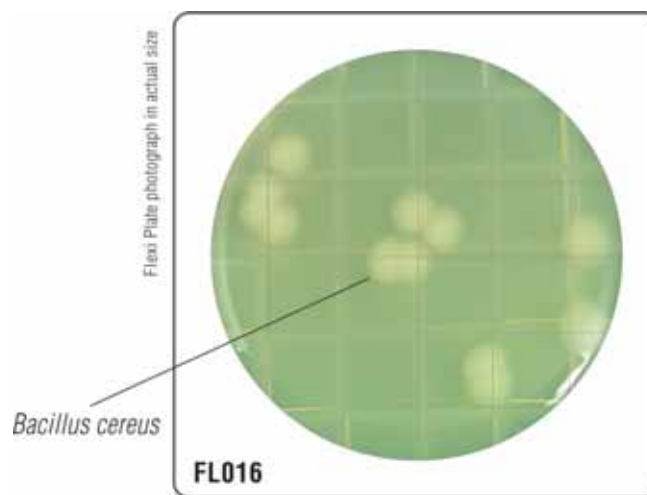
**Quantity of Medium** : 9 ml of gel in plastic plate.

**Reaction** : Reaction of the medium is pH 7.4 ± 0.2.

**Sterility Test** : Sterility of the medium was checked for 14 days. Medium was found sterile without any colony formation on surface of solid medium.

**Cultural Response** : Cultural characteristics observed after an incubation at 35-37°C for 16-18 hours.

Organisms (ATCC) (WDCM*)	Growth
<i>B. cereus</i> (ATCC 10876)	luxuriant
<i>B. subtilis</i> (ATCC 6633) (00003*)	luxuriant





**HiTouch™ FlexiPlate™ - Thermophilic *Bacillus***  
For selective enumeration of thermophilic *Bacillus*

FL017

Medium used : HiTouch™ Thermophilic *Bacillus* Count Medium

**Composition \*\***

Ingredients	Grams/Litre
Tryptone	10.00
Dextrose	5.00
Indicator dye	0.04
Agar	15.00

Final pH (at 25°C) 6.7 ± 0.2

\*\* Formula adjusted, standardized to suit performance parameters

**User Profile :**

- ▶ Food industry - raw materials & processed food
- ▶ Dairy industry - raw materials & processed dairy products

**Salient features :**

- ▶ Easy enumeration of aciduric & thermophilic sporeformers from raw and processed food products
- ▶ Easy detection of mesophilic spore-formers (aerobic) from dairy products
- ▶ Thermotolerant acid producers appear as yellow colonies due to the presence of an indicator dye
- ▶ Incubation temperature is 55°C
- ▶ Results within 48 hours

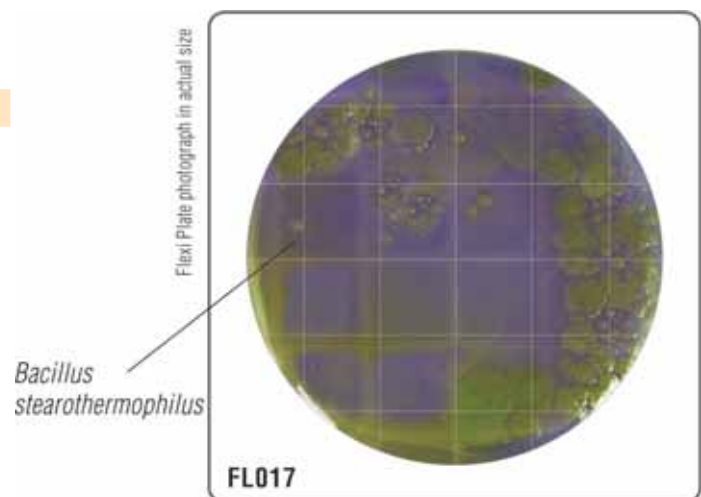
**Storage**

On receipt store between 2-8°C. Use before expiry date on the label.

**Quality Control**

- Appearance** : Sterile plastic plate containing purple coloured clear to slightly opalescent firm gel.
- Quantity of Medium** : 9 ml of gel in plastic plate.
- Reaction** : Reaction of the medium is pH 6.7 ± 0.2.
- Sterility Test** : Sterility of the medium was checked for 14 days. Medium was found sterile without any colony formation on surface of solid medium.
- Cultural Response** : Cultural characteristics observed after an incubation at 55°C for 48 hours.

Organisms (ATCC)	Growth	Colour of Colony
<i>B. brevis</i> (ATCC 8246)	good - luxuriant	yellow
<i>B. coagulans</i> (ATCC 8038)	good - luxuriant	yellow
<i>B. stearotherophilus</i> (ATCC7953)	good - luxuriant	yellow



## HiTouch™ ECC Count FlexiPlate™

For detection and enumeration of *Escherichia coli* and coliforms

FL022

Medium used : HiTouch™ Sensitivity Coliform Count Medium

### Composition \*\*

Ingredients	Grams/Litre
Peptone, special	6.00
Tryptone	3.30
Buffering agent	1.60
Sodium chloride	2.00
Sodium pyruvate	1.00
L-Tryptophan	1.00
Sorbitol	1.00
Tergitol	0.15
Chromogenic indicator	0.43
Agar	10.00

Final pH (at 25°C) 6.8 ± 0.2

\*\* Formula adjusted, standardized to suit performance parameters

### User Profile :

- ▶ Food and Dairy Industries - raw material, air & surface testing
- ▶ Poultry & Meat - raw material, air & surface testing
- ▶ Water & waste water - water samples testing laboratories
- ▶ Other laboratories where microbiological work is carried out.

### Salient features :

- ▶ For simultaneous detection of *E. coli* and other coli forms
- ▶ Rich in ingredients that help even the sublethally injured coliforms to grow rapidly
- ▶ Contains Tergitol 7 which inhibits gram-positive as well as some gram-negative bacteria other than coli forms
- ▶ Presence of chromogens helps to differentiate between different coliforms on basis of their contrast colony colours
- ▶ Incubation temperature is 35-37°C
- ▶ Results within 18-24 hours

### Storage

On receipt store between 2-8°C. Use before expiry date on the label.

### Quality Control

**Appearance** : Sterile plastic plate containing light pink coloured opalescent clear to slightly opalescent firm gel.

**Quantity of Medium** : 9 ml of gel in plastic plate

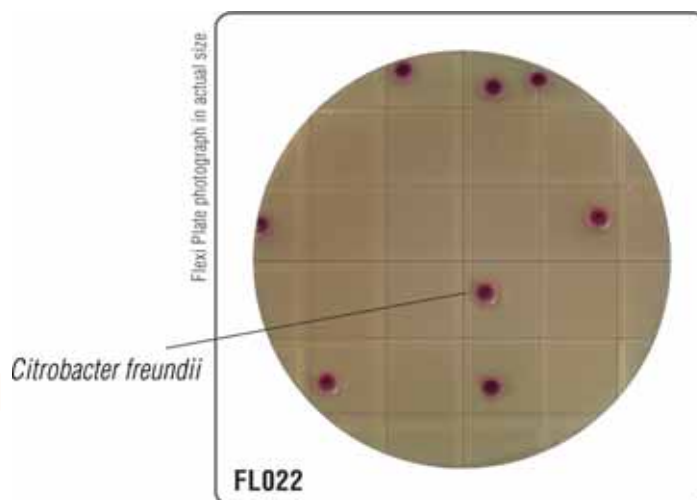
**Reaction** : Reaction of the medium is pH 6.8 ± 0.2.

**Sterility Test** : Sterility of the medium was checked for 14 days. Medium was found sterile without any colony formation on surface of solid medium

**Cultural Response** : Cultural characteristics observed after an incubation at 35-37°C for 18-24 hours.

Organisms (ATCC) (WDCM*)	Growth	Colour of Colony	Salmon-Gal	X-glucuronide
<i>C. freundii</i> (ATCC 8090)	good - luxuriant	salmon to red (big)	+	-
<i>Kleb. aerogenes</i> (ATCC 13048) (00175*)	good - luxuriant	salmon to red	+	-
<i>E. coli</i> (0157 : H7) (NCTC 12900) (00014*)	good - luxuriant	salmon to red	+	-
<i>E. coli</i> (ATCC 25922) (00013*)	good - luxuriant	dark blue to violet	+	-
<i>Ent. faecalis</i> (ATCC 29212) (00087*)	inhibited		-	-
<i>S. Enteritidis</i> (ATCC 13076) (00030*)	good	colourless	-	-
<i>S. flexneri</i> (ATCC 12022) (00126*)	good	colourless to slightly pink	-	+

# Formerly Enterobacter aerogenes



## HiTouch™ *Salmonella* Count FlexiPlate™

For selective isolation and enumeration of *Salmonella* Typhi and other *Salmonella* species

FL023

Medium used : HiTouch™ *Salmonella* Count Medium

### Composition \*\*

Ingredients	Grams/Litre
Yeast extract	3.00
L-Lysine	5.00
Carbohydrate source	18.50
Sodium chloride	5.00
Bile salts	2.50
Sodium thiosulphate	6.80
Ferric ammonium citrate	0.80
Phenol red	0.08
Agar	15.00

Final pH (at 25°C) 7.4 ± 0.2

\*\* Formula adjusted, standardized to suit performance parameters

### User Profile :

- ▶ Food and Dairy Industries - raw materials, in process and finished products
- ▶ Poultry & Meat - raw materials, and meat products
- ▶ Pharmaceutical Industry - raw materials and finished products
- ▶ Water & waste water - water samples testing laboratories
- ▶ Other laboratories where microbiological work is carried out.

### Salient features :

- ▶ Selective medium for the isolation and enumeration of *Salmonella* Typhi and other *Salmonella* species.
- ▶ Contains bile salt as a selective agent which inhibits gram-positive microorganisms.
- ▶ *Salmonella* utilizes carbohydrate and decarboxylase lysine changing the pH to alkaline.
- ▶ *Salmonella* shows black centred colonies due to H<sub>2</sub>S production.
- ▶ Other coliforms show yellow colonies.
- ▶ Incubation temperature is 35-37°C.
- ▶ Confirmed results within 18-24 hours.

### Storage

On receipt store between 2-8°C. Use before expiry date on the label.

### Quality Control

**Appearance** : Sterile plastic plate containing red coloured clear to slightly opalescent firm gel.

**Quantity of Medium** : 9 ml of gel in plastic plate.

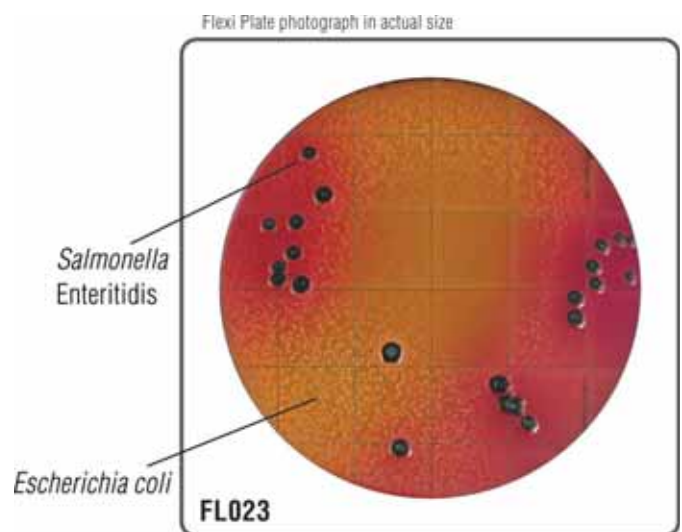
**Reaction** : Reaction of the medium is pH 7.4 ± 0.2.

**Sterility Test** : Sterility of the medium was checked for 14 days. Medium was found sterile without any colony formation on surface of solid medium.

**Cultural Response** : Cultural characteristics observed after an incubation at 35-37°C for 18-24 hours.

Organisms (ATCC) (WDCM*)	Growth	Colour of Colony
* <i>Kleb. aerogenes</i> (ATCC 13048) (00175*)	fair	yellow
<i>E. coli</i> (ATCC 25922) (00013*)	fair	yellow
<i>P. mirabilis</i> (ATCC 25933)	good-luxuriant	yellow (black centres)
<i>P. vulgaris</i> (ATCC 13315)	good-luxuriant	yellow (black centres)
<i>S. aureus</i> (ATCC 25923) (00034*)	inhibited	-
<i>S. dysenteriae</i> (ATCC 13313)	good-luxuriant	red
<i>S. Enteritidis</i> (ATCC 13076) (00030*)	good-luxuriant	red with black centres
<i>S. Paratyphi A</i> (ATCC 9150)	good-luxuriant	red
<i>S. Paratyphi B</i> (ATCC 8739)	good-luxuriant	red with black centers
<i>S. Typhi</i> (ATCC 6539)	good-luxuriant	red with black centres
<i>S. Typhimurium</i> (ATCC 14028) (00031*)	good-luxuriant	red with black centres
<i>S. sonnei</i> (ATCC 25931)	fair-good	red

# Formerly *Enterobacter aerogenes*



**HiTouch™ *Listeria* Count FlexiPlate™**

For isolation and enumeration of *Listeria* species

**FL024**

Medium used : HiTouch™ *Listeria* Count Medium

**Composition \*\***

Ingredients	Grams/Litre
Biopeptone	24.00
Lithium chloride	15.00
Sodium chloride	5.00
Esculin	1.00
Ammonium ferric citrate	0.50
Agar	10.00

Final pH (at 25°C) 7.0 ± 0.2

\*\* Formula adjusted, standardized to suit performance parameters

**User Profile :**

- ▶ Water and waste water - Water samples laboratories
- ▶ Clinical laboratories - Clinical samples

**Salient features :**

- ▶ For enumeration of *Listeria* species from clinical specimens, water supplies etc.
- ▶ Contains lithium chloride and antibiotics which inhibit gram-negative and most gram-positive organisms
- ▶ Black colonies of *Listeria monocytogenes* which hydrolyzes esculin to esculatin
- ▶ Incubation temperature 35-37°C
- ▶ Confirmed results within 24-48 hours

**Storage**

On receipt store between 2-8°C. Use before expiry date on the label.

**Quality Control**

**Appearance** : Sterile plastic plate containing dark amber coloured clear to slightly opalescent firm gel.

**Quantity of Medium** : 9 ml gel in plastic plate

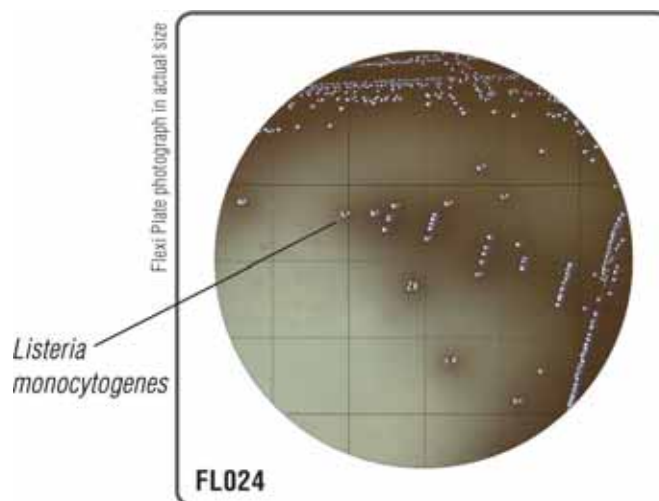
**Reaction** : Reaction of the medium is pH 7.0 ± 0.2.

**Sterility Test** : Sterility of the medium was checked for 14 days. Medium was found sterile without any colony formation on surface of solid medium.

**Cultural Response** : Cultural characteristics observed after an incubation at 35-37°C for 24-48 hours.

Organisms (ATCC) (WDCM*)	Growth	Esculin hydrolysis
<i>B. subtilis</i> (ATCC 6633) (00003*)	inhibited	-
<i>Ent. faecalis</i> (ATCC 29212) (00087*)	inhibited	-
<i>Ent. hirae</i> (ATCC 10541)	inhibited	-
<i>L. monocytogenes</i> (ATCC 19111) (00020*)	luxuriant	+
<i>L. monocytogenes</i> (ATCC 19112)	luxuriant	+
<i>L. monocytogenes</i> (ATCC 19117)	luxuriant	+
<i>S. aureus</i> (ATCC 25923) (00034*)	good	-

KEY : + = Black zone around colonies.



## HiTouch™ Enteric Pathogen Count FlexiPlate™

For selective isolation and differentiation of coliform organisms and other enteric pathogens

FL030

Medium used : HiTouch™ Pathogen Count Medium

### Composition \*\*

Ingredients	Grams/Litre
Peptone special	20.00
Lactose	10.00
Bile salts	1.50
Sodium chloride	5.00
Indicator dyes	0.01
Agar	15.00

Final pH (at 25°C) 7.1 ± 0.2

\*\* Formula adjusted, standardized to suit performance parameters

### User Profile :

- ▶ Food and Dairy Industries - raw materials, inprocess and finished products
- ▶ Poultry & Meat - raw materials and meat products
- ▶ Cosmetic and pharmaceutical industries - raw materials
- ▶ Water & waste water testing Laboratories - water samples
- ▶ Other laboratories where microbiological work is carried out.

### Salient features :

- ▶ For selective isolation and differentiation of coliforms and other enteric pathogens
- ▶ Contains bile nutrients along with indicator dyes as selective agents
- ▶ Coliforms ferment lactose, produce acid and gas which can be differentiated from non-lactose fermenters
- ▶ *E. coli* form pinkish red colony with bile precipitate around it which can be differentiated from other pinkish red coloured colonies of coliforms
- ▶ Incubation temperature is 35-37°C
- ▶ Confirmed results within 18-24 hours

### Storage

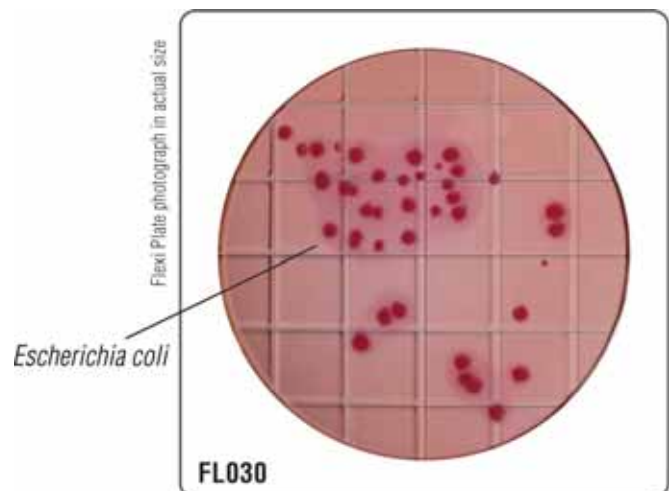
On receipt store between 2-8°C. Use before expiry date on the label.

### Quality Control

- Appearance** : Sterile Plastic plate containing red w/purplish tinge coloured clear to slightly opalescent firm gel.
- Quantity of Medium** : 9 ml of gel in plastic plate
- Reaction** : Reaction of the medium is pH 7.1 ± 0.2.
- Sterility Test** : Sterility of the medium was checked for 14 days. Medium was found sterile without any colony formation on surface of solid medium.
- Cultural Response** : Cultural characteristics observed after an incubation at 35-37°C for 18-24 hours.

Organisms (ATCC) (WDCM*)	Growth	Colour of Colony
<i>Kleb. aerogenes</i> (ATCC 13048) (00175*)	luxuriant	pink to red
<i>E. coli</i> (ATCC 25922) (00013*)	luxuriant	pink to red w/ bile ppt
<i>Ent. faecalis</i> (ATCC 29212) (00087*)	fair to good	pale pink to red
<i>P. vulgaris</i> (ATCC 13315)	luxuriant	colourless
<i>S. aureus</i> (ATCC 25923) (00034*)	inhibited	-
<i>S. Enteritidis</i> (ATCC 13076) (00030*)	luxuriant	colourless
<i>S. Paratyphi A</i> (ATCC 9150)	luxuriant	colourless
<i>S. Paratyphi B</i> (ATCC 8739)	luxuriant	colourless
<i>S. Typhi</i> (ATCC 6539)	luxuriant	colourless
<i>S. flexneri</i> (ATCC 12022) (00126*)	fair to good	colourless

# Formerly *Enterobacter aerogenes*





## HiTouch™ HexaCrome FlexiPlate™

For differentiation of six pathogenic organisms- *Escherichia coli*, *Klebsiella*, *Enterococcus*, *Proteus*, *Staphylococcus aureus* and *Pseudomonas*

**FL031**

Medium used : HiTouch™ HexaCrome Count Medium

### Composition \*\*

Ingredients	Grams/Litre
Peptone, special	18.00
HM Peptone B <sup>f</sup>	6.00
Tryptone	4.00
Chromogenic indicator	12.45
Agar	15.00

Final pH (at 25°C) 7.2 ± 0.2

\*\* Formula adjusted, standardized to suit performance parameters

# Equivalent to Beef extract

### User Profile :

- ▶ Food & Dairy industries – raw materials, air & surface testing
- ▶ Poultry & Meat – raw materials, air & surface testing
- ▶ Pharmaceutical & Cosmetic industries – raw materials, air & surface testing
- ▶ Water testing laboratories – water & waste water
- ▶ Hospitals, operation – for air & surface testing theaters / I.C.U.
- ▶ Other industries, laboratories where microbiological work is carried out

### Salient features :

- ▶ For differentiation of six pathogens on the basis of their contrast colony colours
- ▶ Contains rich sources of amino acids which support the growth of wide variety of organisms
- ▶ Facilitates and expedites the identification of some gram-negative bacteria and gram-positive bacteria on the basis of reactions of genus or species specific enzymes with chromogenic substrates
- ▶ The indole production by *E. coli* can be confirmed using DMACA discs (DD040) to distinguish between *E. coli* and *Enterobacter* colonies
- ▶ *Proteus* colonies can be confirmed by using TDA reagent (R035) for Tryptophan deamination reaction
- ▶ Recommended for use in place of MacConkey Agar
- ▶ Incubation temperature is 35-37°C
- ▶ Confirmed results within 18-24 hours

### Storage

On receipt store between 2-8°C. Use before expiry date on the label.

### Quality Control

**Appearance** : Sterile Plastic plate containing light amber coloured clear to slightly opalescent firm gel.

**Quantity of Medium** : 9 ml of gel in plastic plate.

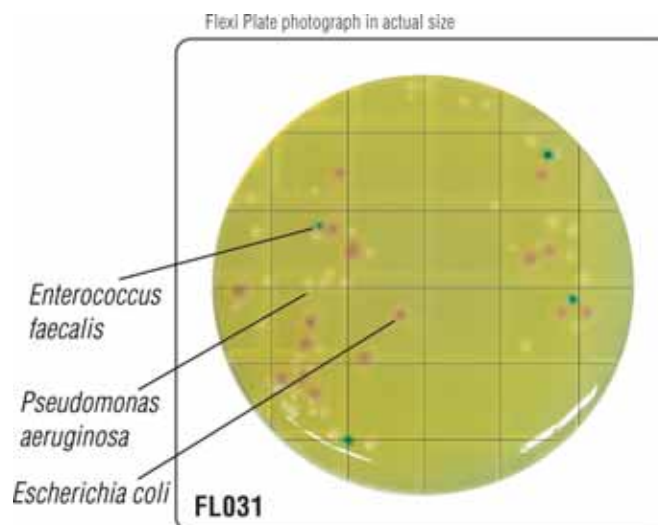
**Reaction** : Reaction of the medium is pH 7.2 ± 0.2.

**Sterility Test** : Sterility of the medium was checked for 14 days. Medium was found sterile without any colony formation on surface of solid medium.

**Cultural Response** : Cultural characteristics observed after an incubation at 35-37°C for 18-24 hours.

Organisms (ATCC) (WDCM*)	Growth	Colour of Colony
<i>E. coli</i> (ATCC 25922) (00013*)	luxuriant	purple
<i>Ent. faecalis</i> (ATCC 29212) (00087*)	luxuriant	blue - green
<i>K. pneumoniae</i> (ATCC 13883) (00097*)	luxuriant	blue - green (mucoid)
<i>P. mirabilis</i> (ATCC 10975)	luxuriant	light brown
<i>Ps. aeruginosa</i> (ATCC 27853) (00025*)	luxuriant	colourless (greenish pigment may be observed)
<i>S. aureus</i> (ATCC 25923) (00034*)	luxuriant	golden yellow

KEY : += Black zone around colonies.



## HiTouch™ OGYE FlexiPlate™

For isolation, enumeration and differentiation of yeasts and moulds

FL032

Medium used : HiTouch™ OGYE Medium

### Composition \*\*

Ingredients	Grams/Litre
Yeast extract	4.00
Carbohydrate source	20.00
Chromogenic mixture	1.10
Inhibitory agent	0.10
Agar	12.00

Final pH (at 25°C) 7.0 ± 0.2

\*\* Formula adjusted, standardized to suit performance parameters

### User Profile :

- ▶ Cosmetics & Pharmaceutical industries - raw materials, inprocess and finished products
- ▶ Veterinary & Vaccine - for environmental testing
- ▶ Agriculture - raw material, soil samples
- ▶ Food & Dairy industries - raw material, inprocess and processed food products
- ▶ Beverage industry - raw material and environmental testing
- ▶ Other laboratories where microbiological work is carried out

### Salient features :

- ▶ Selective and differential medium for yeast and moulds
- ▶ Contains inhibitory agent that inhibits the growth of Lactobacilli encountered in milk and milk products
- ▶ Contains chromogenic substrate for differentiation
- ▶ Incubation temperature is 22-28°C
- ▶ Confirmed results within 48-72 hours

### Storage

On receipt store between 2-8°C. Use before expiry date on the label.

### Quality Control

**Appearance** : Sterile Plastic plate containing light amber coloured clear to slightly opalescent firm gel.

**Quantity of Medium** : 9 ml of gel in plastic plate.

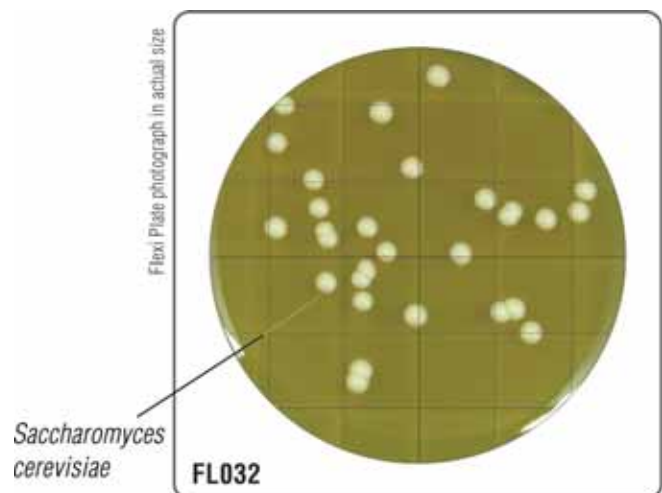
**Reaction** : Reaction of the medium is pH 7.0 ± 0.2.

**Sterility Test** : Sterility of the medium was checked for 14 days. Medium was found sterile without any colony formation on surface of solid medium.

**Cultural Response** : Cultural characteristics observed after an incubation at 22-28°C for 48-72 hours.

Organisms (ATCC) (WDCM*)	Growth	Colour of Colony
# <i>Aspergillus brasiliensis</i> (ATCC 16404) (00053*)	luxuriant	light blue w/ black spores
<i>C. albicans</i> (ATCC 10231) (00055*)	luxuriant	green
<i>E. coli</i> (ATCC 25922) (00013*)	inhibited	-
<i>S. cerevisiae</i> (ATCC 19615) (00058*)	luxuriant	colourless

# formerly known as *Aspergillus niger*



## HiTouch™ FlexiPlate™ M-TA For isolation and enumeration of coliforms

FL033

Medium used : HiTouch™ Modified Tergitol 7 Agar

### Composition \*\*

Ingredients	Grams/Litre
Peptone	10.0
Yeast extract	6.00
HM extract#	5.00
Lactose	20.0
Tergitol	0.10
Bromo thymol blue	0.05
Agar	16.0
1% Triphenyl Tetrazolium chloride solution	2.5 ml

Final pH (at 25°C) 7.2 ± 0.2

\*\* Formula adjusted, standardized to suit performance parameters

# Equivalent to Meat extract

### User Profile :

- ▶ Water and Waste water - water sample testing laboratories
- ▶ Food and Dairy industry - raw materials, inprocess material and finished products
- ▶ Cosmetics and Pharmaceuticals Industries - raw materials, inprocess material and finished products
- ▶ Meat and poultry - raw material and meat products
- ▶ Other laboratories where microbiological work is carried out.

### Salient features :

- ▶ For detection and enumeration of coliforms
- ▶ *E. coli* gives yellow coloured colonies with yellow zone
- ▶ Triphenyl Tetrazolium chloride allows earlier recognition and identification of *Escherichia coli* and *Enterobacter aerogenes* in water and food
- ▶ Incubate at 35 -37°C
- ▶ Results within 18 - 24 hours

### Storage

On receipt store between 2-8°C. Use before expiry date on the label.

### Quality Control

**Appearance** : Sterile Plastic plate containing green coloured clear to slightly opalescent firm gel.

**Quantity of Medium** : 9 ml of gel in plastic plate.

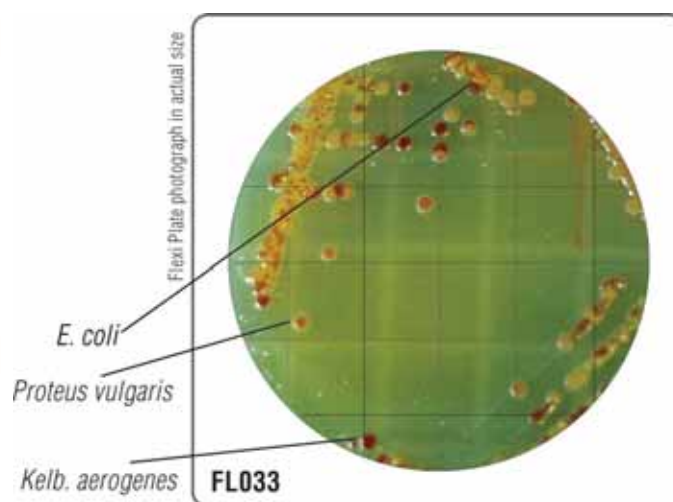
**Reaction** : Reaction of the medium is pH 7.2 ± 0.2.

**Sterility Test** : Sterility of the medium was checked for 14 days. Medium was found sterile without any colony formation on surface of solid medium.

**Cultural Response** : Cultural characteristics observed after an incubation at 35 - 37°C for 18 - 24 hours.

Organisms (ATCC) (WDCM*)	Growth	Colour of Colony
* <i>Kleb. aerogenes</i> (ATCC 13048) (00175*)	luxuriant	reddish brown
<i>E. coli</i> (ATCC 25922) (00013*)	luxuriant	yellow with red centre
<i>P. vulgaris</i> (ATCC 13315)	good	yellow with red centre
<i>Ps. aeruginosa</i> (ATCC 27853) (00025*)	good	red with bluish zone
<i>S. aureus</i> (ATCC 25923) (00034*)	inhibited	-
<i>S. Typhimurium</i> (ATCC 14028) (00031*)	luxuriant	red with bluish zone

# Formerly *Enterobacter aerogenes*



**HiTouch™ FlexiPlate™ -TJA**  
For isolation and enumeration of *Lactobacilli*

**FL034**

<b>Medium used :</b> HiTouch™ Tomato Juice Agar	
<b>Composition **</b>	
Ingredients	Grams/Litre
Tomato juice (400 ml)	20.0
Tryptone	10.0
SM powder#	10.0
Agar	11.0

Final pH (at 25°C) 6.1 ± 0.2

\*\* Formula adjusted, standardized to suit performance parameters

# Equivalent to Peptonized milk

**User Profile :**

- ▶ For industry - in-process material and finished product.
- ▶ Meat raw material and meat products.
- ▶ Dairy industry milk products and processed products.

**Salient features :**

- ▶ For easy enumeration of Lactobacilli
- ▶ Essential nutrients in this medium facilitates the growth of Lactobacilli
- ▶ Incubate at 35 -37°C
- ▶ Results within 40 - 48 hours

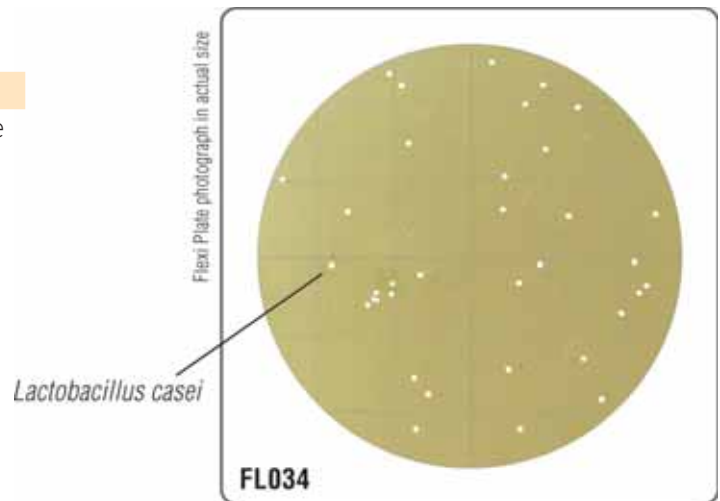
**Storage**

On receipt store between 2-8°C. Use before expiry date on the label.

**Quality Control**

- Appearance** : Sterile plastic plate containing medium amber coloured clear to slightly opalescent firm gel.
- Quantity of Medium** : 9 ml of gel in plastic plate.
- Reaction** : Reaction of the medium is pH 6.1 ± 0.2.
- Sterility Test** : Sterility of the medium was checked for 14 days. Medium was found sterile without any colony formation on surface of solid medium.
- Cultural Response** : Cultural characteristics observed after an incubation at 35 - 37°C for 40 - 48 hours.

Organisms (ATCC) (WDCM*)	Growth
<i>L. acidophilus</i> (ATCC 4356) (00098*)	luxuriant
<i>L. casei</i> (ATCC 9595)	luxuriant
<i>L. leichmannii</i> (ATCC 4797)	luxuriant
<i>S. aureus</i> (ATCC 25923) (00034*)	luxuriant



**HiTouch™ HiTouch™ SCD A w/ Polysorbate 80 & Lecithin FlexiPlate™**

for determining the efficiency of sanitization of containers, equipment surfaces, water miscible cosmetics, etc. It can also be used to enumerate the organisms from water insoluble products and fatty products containing preservatives or antimicrobials

**FL035**

**Medium used :** HiTouch™ Soyabean Casein Digest Agar w/ Polysorbate 80 and Lecithin

<b>Composition **</b>	
Ingredients	Grams/Litre
Tryptone	15.00
Soya peptone	5.00
Sodium chloride	5.00
Lecithin	0.70
Polysorbate 80 (Tween 80)	5.00
Agar	15.00

Final pH (at 25°C) 7.3 ± 0.2

\*\* Formula adjusted, standardized to suit performance parameters

**User Profile :**

- ▶ Environment and sanitary testing
- ▶ For surface examination of surfaces and for the detection and enumeration of microorganisms present on surfaces of sanitary importance

**Salient features :**

- ▶ For easy enumeration of microorganisms of sanitary importance
- ▶ Presence of lecithin & polysorbate 80 helps to recover microorganisms from surfaces with residues of disinfectant
- ▶ Incubation temperature is 35 - 37°C
- ▶ Results within 18 - 24 hours

**Storage**

On receipt store between 15-25°C. Use before expiry date on the label.

**Quality Control**

**Appearance :** Sterile plastic plate containing light to medium amber coloured clear to slightly opalescent firm gel.

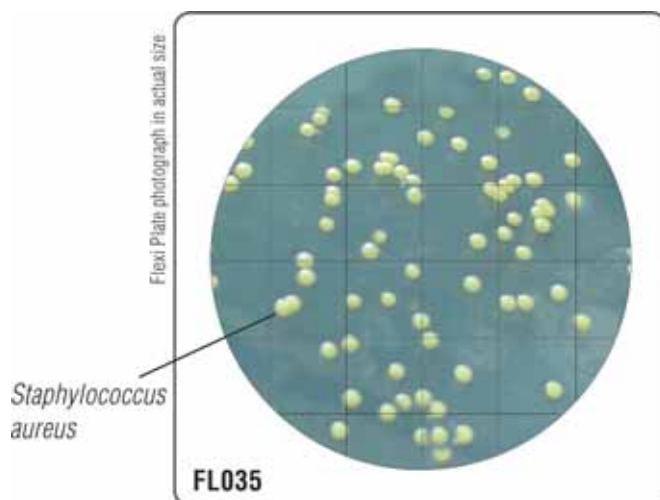
**Quantity of Medium :** 9 ml of gel in plastic plate.

**Reaction :** Reaction of the medium is pH 7.3 ± 0.2

**Sterility Test :** Sterility of the medium was checked for 14 days. Medium was found sterile without any colony formation on surface of solid medium.

**Cultural Response :** Cultural characteristics observed after incubation at 35-37°C for 18-24 hours.

Organisms (ATCC) (WDCM*)	Growth	Colour of Colony
<i>S. aureus</i> (ATCC 25923) (00034*)	luxuriant	Yellow to gold
<i>E. coli</i> (ATCC 25922) (00013*)	luxuriant	Colourless
<i>Ps. aeruginosa</i> (ATCC 27853) (00025*)	luxuriant	Colourless (may have green pigment)





## HiTouch™ SCDA w/ Polysorbate 80 & Lecithin FlexiPlate™ (γ irradiated)

for determining the efficiency of sanitization of containers, equipment surfaces, water miscible cosmetics, etc. It can also be used to enumerate the organisms from water insoluble products and fatty products containing preservatives or antimicrobials

FL035G

<b>Medium used :</b> HiTouch™ Soyabean Casein Digest Agar w/ Polysorbate 80 and Lecithin	
<b>Composition **</b>	
Ingredients	Grams/Litre
Tryptone	15.00
Soya peptone	5.00
Sodium chloride	5.00
Lecithin	0.70
Polysorbate 80 (Tween 80)	5.00
Agar	15.00

Final pH (at 25°C) 7.3 ± 0.2

\*\* Formula adjusted, standardized to suit performance parameters

### User Profile :

- ▶ Environment and sanitary testing
- ▶ For surface examination of surfaces and for the detection and enumeration of microorganisms present on surfaces of sanitary importance

### Salient features :

- ▶ Gamma irradiated
- ▶ For easy enumeration of microorganisms of sanitary importance
- ▶ Presence of lecithin & polysorbate 80 helps to recover microorganisms from surfaces with residues of disinfectant
- ▶ Incubation temperature is 35 - 37°C
- ▶ Results within 18 - 24 hours

### Storage

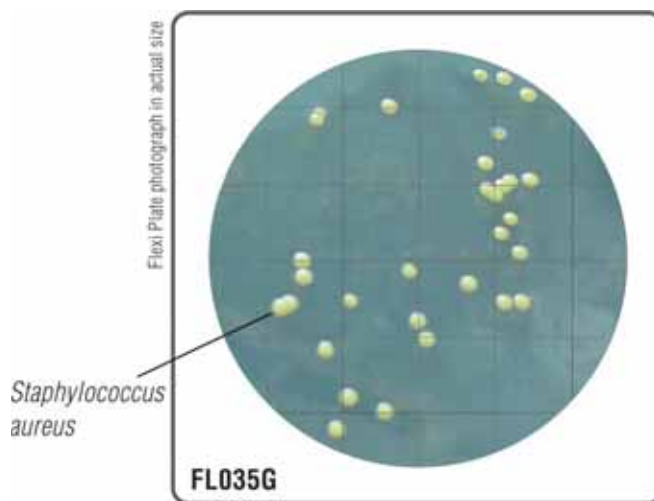
On receipt store between 15-25°C. Use before expiry date on the label.

### Quality Control

**Appearance** : Sterile plastic plate containing light to medium amber coloured clear to slightly opalescent firm gel.

- Quantity of Medium** : 9 ml of gel in plastic plate.
- Reaction** : Reaction of the medium is pH 7.3 ± 0.2
- Sterility Test** : Sterility of the medium was checked for 14 days. Medium was found sterile without any colony formation on surface of solid medium.
- Cultural Response** : Cultural characteristics observed after incubation at 35-37°C for 18-24 hours.

Organisms (ATCC) (WDCM*)	Growth	Colour of Colony
<i>S. aureus</i> (ATCC 25923) (00034*)	luxuriant	Yellow to gold
<i>E. coli</i> (ATCC 25922) (00013*)	luxuriant	Colourless
<i>Ps. aeruginosa</i> (ATCC 27853) (00025*)	luxuriant	Colourless (may have green pigment)



**HiTouch™ SCDA w/ Polysorbate 80 & Lecithin FlexiPlate™ (γ irradiated) (Triple Pack)**

**FL035GT**

for determining the efficiency of sanitization of containers, equipment surfaces, water miscible cosmetics, etc. It can also be used to enumerate the organisms from water insoluble products and fatty products containing preservatives or antimicrobials

<b>Medium used :</b> HiTouch™ Soyabean Casein Digest Agar w/ Polysorbate 80 and Lecithin	
<b>Composition **</b>	
Ingredients	Grams/Litre
Tryptone	15.00
Soya peptone	5.00
Sodium chloride	5.00
Lecithin	0.70
Polysorbate 80 (Tween 80)	5.00
Agar	15.00

Final pH (at 25°C) 7.3 ± 0.2

\*\* Formula adjusted, standardized to suit performance parameters

**User Profile :**

- ▶ Environment and sanitary testing
- ▶ For surface examination of surfaces and for the detection and enumeration of microorganisms present on surfaces of sanitary importance

**Salient features :**

- ▶ Gamma irradiated, Triple Packed
- ▶ For easy enumeration of microorganisms of sanitary importance
- ▶ Presence of lecithin & polysorbate 80 helps to recover microorganisms from surfaces with residues of disinfectant
- ▶ Incubation temperature is 35 - 37°C
- ▶ Results within 18 - 24 hours

**Storage**

On receipt store between 15-25°C. Use before expiry date on the label.

**Quality Control**

**Appearance** : Sterile plastic plate containing light to medium amber coloured clear to slightly opalescent firm gel.

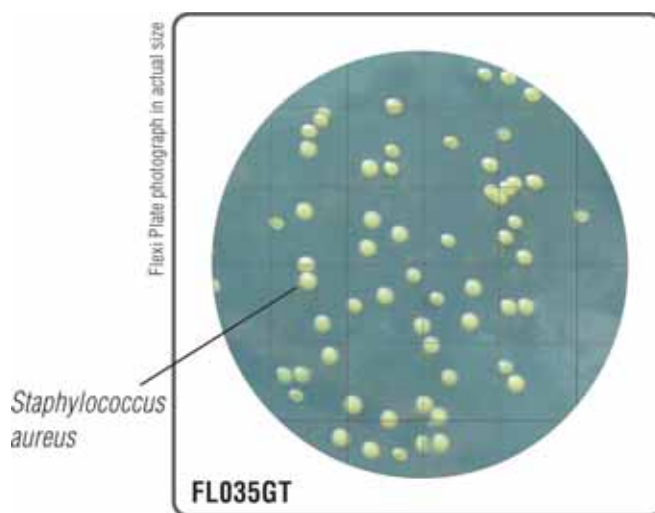
**Quantity of Medium** : 9 ml of gel in plastic plate.

**Reaction** : Reaction of the medium is pH 7.3 ± 0.2

**Sterility Test** : Sterility of the medium was checked for 14 days. Medium was found sterile without any colony formation on surface of solid medium.

**Cultural Response** : Cultural characteristics observed after incubation at 35-37°C for 18-24 hours.

Organisms (ATCC (WDCM*))	Growth	Colour of Colony
<i>E. coli</i> (ATCC 25922) (00013*)	luxuriant	Colourless
<i>Ps. aeruginosa</i> (ATCC 27853) (00025*)	luxuriant	Colourless (may have green pigment)
<i>S. aureus</i> (ATCC 25923) (00034*)	luxuriant	Yellow to gold



**HiTouch™ HiCrome™ *Ent.sakazakii* Agar FlexiPlate™**

For enumeration (count) and differentiation of *Enterobacter sakazakii* (*Cronobacter sakazakii*)

**FL036**

Medium used : HiTouch™ HiCrome *Ent.sakazakii* Agar Medium

**Composition \*\***

Ingredients	Grams/Litre
Tryptone	15.00
Soya peptone	5.00
Sodium chloride	5.00
Sodium deoxycholate	0.50
Sodium thiosulphate	1.00
Chromogenic mixture	10.17
Agar	15.00

Final pH (at 25°C) 7.3 ± 0.2

\*\* Formula adjusted, standardized to suit performance parameters

**User Profile :**

- ▶ Food & Dairy industries - for specific identification of *Ent. sakazakii*
- ▶ Water & waste water testing laboratories - for detection of Enterobacters in water.
- ▶ Clinical samples-Urine & faeces testing - for differentiation of *Ent.sakazakii* from other *Enterobacteriaceae*

**Salient features :**

- ▶ For easy enumeration, differentiation and interpretation of *Ent. sakazakii* from food, water, sewage, urine and faeces samples
- ▶ Chromogenic substance differentiates between *E. coli*, *Ent. aerogenes*, *Ent. sakazakii* and *K. pneumoniae*
- ▶ Incubate on 35-37°C
- ▶ Results within 18-24 hours

**Storage**

On receipt store between 2-8°C. Use before expiry date on the label.

**Quality Control**

**Appearance** : Sterile plastic plate containing light yellow coloured clear to slightly opalescent firm gel.

**Quantity of Medium** : 9 ml of gel in plastic plate.

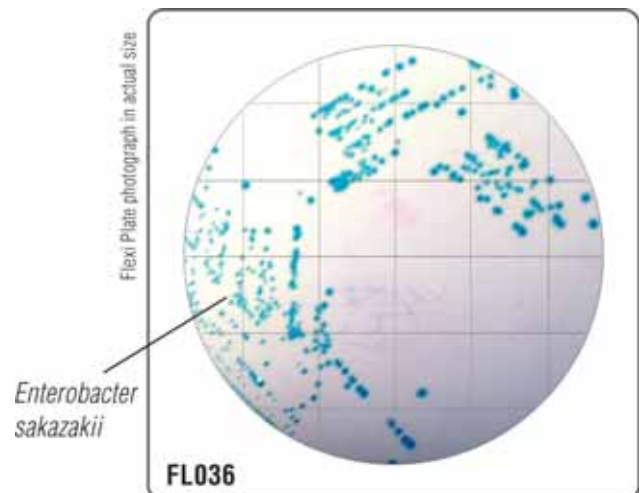
**Reaction** : Reaction of the medium is pH 7.3 ± 0.2

**Sterility Test** : Sterility of the medium was checked for 14 days. Medium was found sterile without any colony formation on surface of solid medium.

**Cultural Response** : Cultural characteristics observed after incubation at 35-37°C for 18-24 hours.

Organisms (ATCC) (WDCM*)	Growth	Colour of colony
<i>E. coli</i> (ATCC 25922) (00013*)	good - luxuriant	yellow
# <i>Kleb. aerogenes</i> (ATCC 13048) (00175*)	good - luxuriant	bluish
<i>Ent. faecalis</i> (ATCC 29212) (00087*)	inhibited	-
<i>Ent. sakazakii</i> (ATCC 12868)	good - luxuriant	blue
<i>S. aureus</i> (ATCC 25923) (00034*)	inhibited	-
<i>K. pneumoniae</i> (ATCC 13883) (00097*)	good - luxuriant	yellow (mucoid)

# Formerly *Enterobacter aerogenes*



## HiTouch™ FlexiPlate™ - R2A

For enumeration (count) of treated potable water using longer incubation periods

**FL037**

<b>Medium used :</b> HiTouch™ R2A Agar	
<b>Composition **</b>	
Ingredients	Grams/Litre
Acicase#	0.50
Yeast extract	0.50
Proteose peptone	0.50
Dextrose	0.50
Starch, soluble	0.50
Dipotassium hydrogen phosphate	0.30
Magnesium sulphate	0.024
Sodium pyruvate	0.30
Agar	15.00

Final pH (at 25°C) 7.2 ± 0.2

\*\* Formula adjusted, standardized to suit performance parameters

# Equivalent to casein acid hydrolysate

### User Profile :

- ▶ Water testing laboratories - treated potable water

### Salient features :

- ▶ This medium is standard medium recommended for heterotrophic plate counts
- ▶ It contains nutritionally rich substrates supporting growth of heterotrophs
- ▶ Incubation temperature is 35-37°C
- ▶ Results within 24-72 hours (incubate longer if necessary)

### Storage

On receipt store between 2-8°C. Use before expiry date on the label.

### Quality Control

**Appearance** : Sterile plastic plate containing yellow coloured clear to slightly opalescent firm gel.

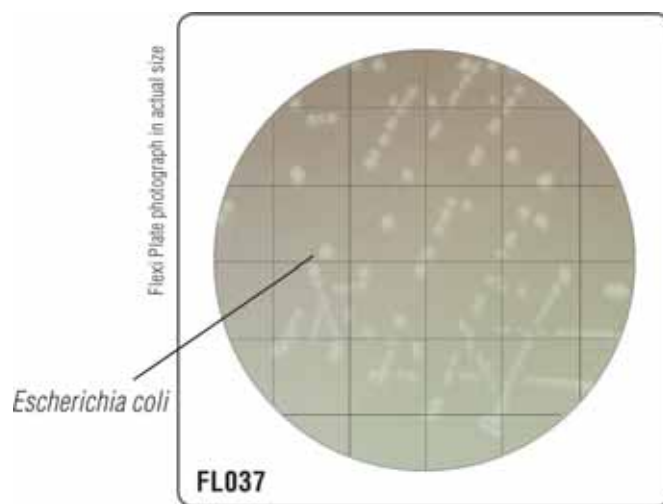
**Quantity of Medium** : 9 ml of gel in plastic plate.

**Reaction** : Reaction of the medium is pH 7.2 ± 0.2

**Sterility Test** : Sterility of the medium was checked for 14 days. Medium was found sterile without any colony formation on surface of solid medium.

**Cultural Response** : Cultural characteristics observed after an incubation at 35-37°C for 24-72 hours.

Organisms (ATCC) (WDCM*)	Growth	Colour of Colony
<i>Candida albicans</i> (ATCC 10231) (00054*)	good - luxuriant	colourless
<i>Escherichia coli</i> (ATCC 25922) (00013*)	good - luxuriant	colourless
<i>Escherichia coli</i> (ATCC 8739) (00012*)	good - luxuriant	colourless
<i>Salmonella</i> Enteritidis (ATCC 13076) (00030*)	good - luxuriant	colourless
<i>Salmonella</i> Typhi (ATCC 6539)	good - luxuriant	colourless
<i>Enterococcus faecalis</i> (ATCC 29212) (00087*)	good - luxuriant	colourless



## HiTouch™ SCDA w/ β Lactamase FlexiPlate™

A general purpose medium for cultivation of wide variety of organisms and for inactivation of β lactam antibiotics

FL038

Medium used : HiTouch™ Soyabean Casein Digest Agar with β Lactamase	
<b>Composition **</b>	
Ingredients	Grams/Litre
Tryptone	15.00
Soyapeptone	5.00
Sodium Chloride	5.00
Agar	15.00
β Lactamase	330 IU

Final pH (at 25°C) 7.3 ± 0.2

\*\* Formula adjusted, standardized to suit performance parameters

### User Profile :

- ▶ Pharmaceutical industry - Environmental Monitoring during aseptic production of β lactam antibiotics
- ▶ Other industries where microbiological work is carried out

### Salient features :

- ▶ For enumeration of microorganisms which otherwise would get inhibited in routine agar medium
- ▶ Gives bacterial count of the environment analysed
- ▶ Incubation temperature is 35-37°C
- ▶ Confirmed results within 18-24 hours

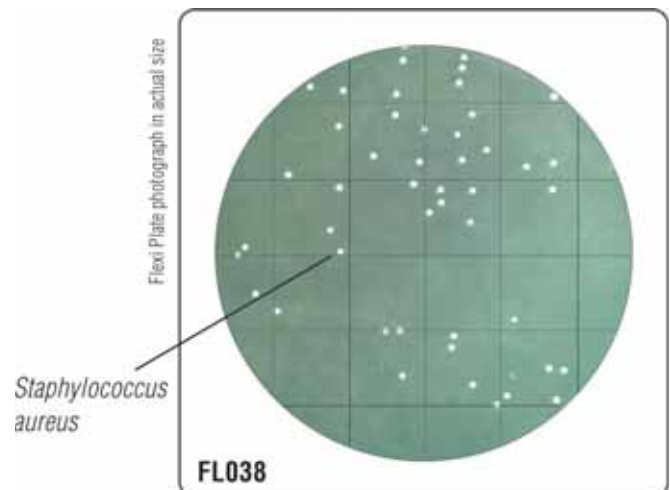
### Storage

On receipt store between 2-8°C. Use before expiry date on the label.

### Quality Control

- Appearance** : Sterile Plastic plate containing light yellow coloured clear to slightly opalescent firm gel firm gel
- Quantity of Medium** : 9 ml of gel in plastic plate
- Reaction** : Reaction of the medium is pH 7.3 ± 0.2
- Sterility Test** : Sterility of the medium was checked for 14 days. Medium was found sterile without any colony formation on surface of solid medium.
- Cultural Response** : Cultural Characteristics observed after an incubation at 35-37°C for 18-24 hours.

Organisms (ATCC) (WDCM*)	Growth
<i>E.coli</i> (ATCC 25922) (00013*)	luxuriant
<i>Proteus mirabilis</i> (ATCC 25933)	luxuriant
<i>Ent.faecalis</i> (ATCC 29212) (00087*)	luxuriant
<i>S.aureus</i> (ATCC 25923) (00034*)	luxuriant
<i>S.aureus</i> (ATCC 29213)	luxuriant





**HiTouch™ Sabouraud Dextrose Agar w/ LTHTh FlexiPlate™**

For determining the efficiency of sanitization of containers, equipment surfaces, water miscible cosmetics etc.

**FL039**

Medium used : HiTouch™ Sabouraud Dextrose Agar w/ LTHTh

**Composition \*\***

Ingredients	Grams/Litre
Mycological Peptone	10.00
Dextrose	40.00
Lecithin	0.70
Sodium thiosulphate	0.50
Histidine	0.50
Polysorbate 80 (Tween 80)	5.00
Agar	15.00

Final pH (at 25°C) 5.6 ± 0.2

\*\* Formula adjusted, standardized to suit performance parameters

**User Profile :**

- ▶ Environment and Sanitary testing
- ▶ For surface examination of surfaces and for the detection and enumeration of microorganisms present on surfaces of sanitary importance

**Salient features :**

- ▶ For easy enumeration of fungi of sanitary importance
- ▶ Presence of lecithin and polysorbate 80 helps to recover microorganism from surfaces with residues of disinfectant
- ▶ Evaluation of samples collected from areas before and after the treatment with disinfectant evaluates cleaning procedures in environmental sanitation
- ▶ Incubation temperature is 22-25°C
- ▶ Results within 40-48 hours

**Storage**

On receipt store between 2-8°C. Use before expiry date on the label.

**Quality Control**

**Appearance** : Sterile Plastic plate containing light amber coloured clear to slightly opalescent firm gel

**Quantity of Medium** : 9 ml of gel in plastic plate.

**Reaction** : Reaction of the medium is pH 5.6 ± 0.2

**Sterility Test** : Sterility of the medium was checked for 14 days. Medium was found sterile without any colony formation on surface of solid medium.

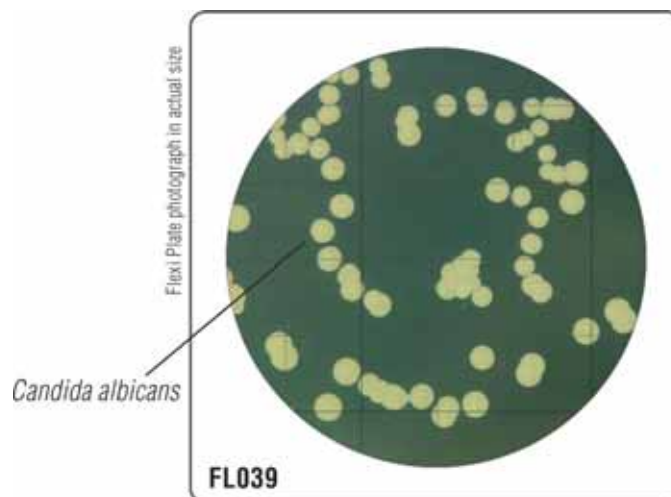
**Cultural Response** : Cultural Characteristics observed after an incubation at 22-25°C for 40-48 hours.

Organisms (ATCC) (WDCM*)	Growth	Colour of Colony
<i>Candida albicans</i> (ATCC 10231) (00054*)	luxuriant	white
<i>Saccharomyces cerevisiae</i> (ATCC 9763) (00058*)	luxuriant	white
# <i>Aspergillus brasiliensis</i> (ATCC 16404) (00053*)	*Good-luxuriant	-
<i>Trichophyton rubrum</i> (ATCC 28191)	**Good-luxuriant	-

\* incubated for 72 hours

\*\* incubated for 5-7 days

# Formerly known as *Aspergillus niger*



**HiTouch™ Sabouraud Dextrose Agar w/ LTHTh FlexiPlate™ (γ irradiated) (Triple Pack) FL039GT**

For determining the efficiency of sanitization of containers, equipment surfaces, water miscible cosmetics etc.

Medium used : HiTouch™ Sabouraud Dextrose Agar w/ LTHTh

Composition **	
Ingredients	Grams/Litre
Mycological Peptone	10.00
Dextrose	40.00
Lecithin	0.70
Histidine	0.50
Sodium thiosulphate	0.50
Polysorbate 80 (Tween 80)	5.00
Agar	15.00

Final pH (at 25°C) 5.6 ± 0.2

\*\* Formula adjusted, standardized to suit performance parameters

**User Profile :**

- ▶ Environment and Sanitary testing
- ▶ For surface examination of surfaces and for the detection and enumeration of microorganisms present on surfaces of sanitary importance

**Salient features :**

- ▶ Triple pack, Gamma irradiated
- ▶ For easy enumeration of fungi of sanitary importance
- ▶ Presence of lecithin and polysorbate 80 helps to recover microorganism from surfaces with residues of disinfectant
- ▶ Evaluation of samples collected from areas before and after the treatment with disinfectant evaluates cleaning procedures in environmental sanitation.
- ▶ Incubation temperature is 22-25°C
- ▶ Results within 40-48 hours

**Storage**

On receipt store between 2-8°C. Use before expiry date on the label.

**Quality Control**

**Appearance** : Sterile Plastic plate containing light amber coloured clear to slightly opalescent firm gel

**Quantity of Medium** : 9 ml of gel in plastic plate.

**Reaction** : Reaction of the medium is pH 5.6 ± 0.2

**Sterility Test** : Sterility of the medium was checked for 14 days. Medium was found sterile without any colony formation on surface of solid medium.

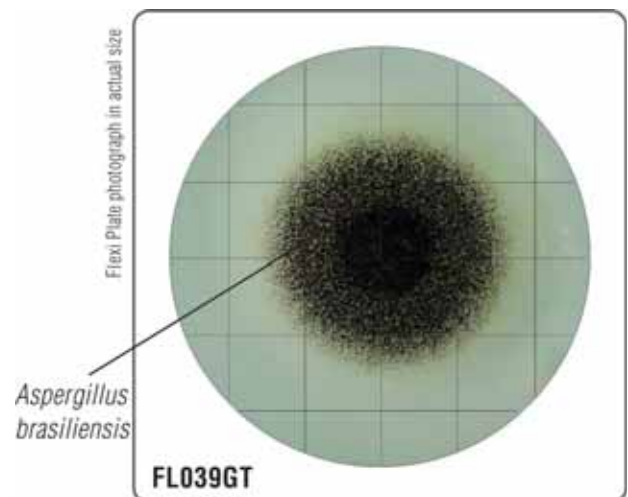
**Cultural Response** : Cultural Characteristics observed after an incubation at 22-25°C for 40-48 hours.

Organisms (ATCC)	Growth	Colour of Colony
<i>Candida albicans</i> (ATCC 10231) (00054*)	luxuriant	white
<i>Saccharomyces cerevisiae</i> (ATCC 9763) (00058*)	luxuriant	white
# <i>Aspergillus brasiliensis</i> (ATCC 16404) (00053*)	*Good - luxuriant	-
<i>Trichophyton rubrum</i> (ATCC 28191)	**Good - luxuriant	-

\* incubated for 72 hours

\*\* incubated for 5-7 days

# Formerly known as *Aspergillus niger*



**HiTouch™ Sabouraud Chloramphenicol Agar FlexiPlate™ (γ irradiated)**

**FL041G**

For selective cultivation of yeasts and moulds

Medium used : HiTouch™ Sabouraud Chloramphenicol Agar

**Composition \*\***

Ingredients	Grams/Litre
Tryptone	5.00
Peptone	5.00
Dextrose	40.00
Chloramphenicol	0.05
Agar	15.00

Final pH (at 25°C) 5.6 ± 0.2

\*\* Formula adjusted, standardized to suit performance parameters

**User Profile :**

- ▶ Pharmaceutical industries - Microbial limit Tests for fungi-Yeasts and molds
- ▶ Veterinary & Vaccines - General Purpose Culture media
- ▶ Agriculture - General Purpose Culture media
- ▶ Clinical - Non selective culture media for solid media, Fungi-Yeasts and molds

**Salient features :**

- ▶ Gamma irradiated
- ▶ For enumeration of fungi-yeasts and molds
- ▶ Contains inhibitory agent that inhibits growth of Gram positive *S.aureus* and Gram negative *E.coli*
- ▶ Incubation temperature is 22-25°C
- ▶ Results within 40-48 hours

**Storage**

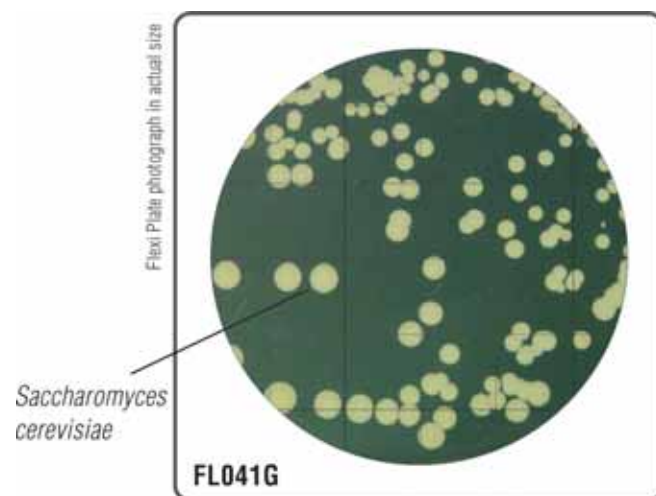
On receipt store between 2-8°C. Use before expiry date on the label.

**Quality Control**

- Appearance** : Sterile Plastic plate containing light amber coloured clear to slightly opalescent firm gel.
- Quantity of Medium** : 9 ml of gel in plastic plate.
- Reaction** : Reaction of the medium is pH 5.6 ± 0.2
- Sterility Test** : Sterility of the medium was checked for 14 days. Medium was found sterile without any colony formation on surface of solid medium.
- Cultural Response** : Cultural Characteristics observed after an incubation at 22-25°C for 40-48 hours.

Organisms (ATCC) (WDCM*)	Growth
<i>Candida albicans</i> (ATCC 10231) (00054*)	luxuriant
<i>Escherichia coli</i> (ATCC 25922) (00013*)	inhibited
<i>Lactobacillus casei</i> (ATCC 9595)	inhibited
* <i>Aspergillus brasiliensis</i> (ATCC 16404) (00053*)	luxuriant
<i>Sachharomyces cerevisiae</i> (ATCC 9763) (00058*)	luxuriant

# Formerly known as *Aspergillus niger*



## HiTouch™ HiCrome™ Universal Agar FlexiPlate™

For presumptive identification of microorganisms from clinical & non clinical specimens

FL042

Medium used : HiTouch™ Universal Agar Medium

### Composition \*\*

Ingredients	Grams/Litre
Peptone	15.00
Tryptone	4.00
Chromogenic mixture	2.50
Agar	13.50

Final pH (at 25°C) 7.2 ± 0.2

\*\* Formula adjusted, standardized to suit performance parameters

### User Profile :

- ▶ Clinical - for detection of enterobacteria in clinical specimens
- ▶ Water - for detection of enterobacteria
- ▶ Food - for detection of enterobacteria from raw makes in processed & processed food
- ▶ Dairy - for detection of enterobacteria from raw material, inprocessed & processed products
- ▶ Cosmetic & Pharmaceutical - Raw material, inprocess & finished product

### Salient features :

- ▶ Presumptive identification of microorganism in mixed population
- ▶ Specific colours due to chromogenic ingredient
- ▶ Incubation temperature is 35-37°C
- ▶ Confirmed results within 18-24 hours

### Storage

On receipt store between 2-8°C. Use before expiry date on the label.

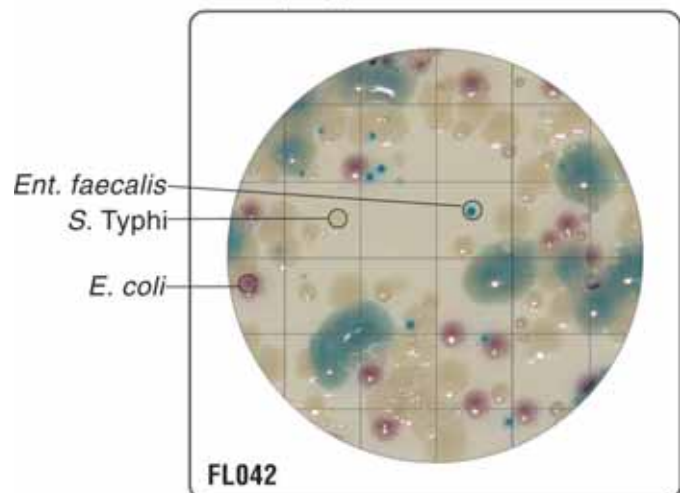
### Quality Control

**Appearance** : Sterile Plastic plate containing light amber coloured clear to slightly opalescent firm gel.

- Quantity of Medium** : 9 ml of gel in plastic plate.
- Reaction** : Reaction of the medium is pH 7.2 ± 0.2
- Sterility Test** : Sterility of the medium was checked for 14 days. Medium was found sterile without any colony formation on surface of solid medium.
- Cultural Response** : Cultural Characteristics observed after an incubation at 35-37°C for 18-24 hours.

Organisms (ATCC) (WDCM*)	Growth	Colour of Colony
<i>Ent. faecalis</i> (ATCC 29212) (00087*)	luxuriant	blue, small
<i>E. coli</i> (ATCC 25922) (00013*)	luxuriant	purple
<i>Kleb. pneumoniae</i> (ATCC 13883) (00097*)	luxuriant	blue-green, mucoid
<i>Pseudomonas aeruginosa</i> (ATCC 27853) (00025*)	luxuriant	colourless (greenish pigment may be observed)
<i>Proteus mirabilis</i> (ATCC 12453)	luxuriant	light brown
<i>Staphylococcus aureus</i> (ATCC 25923) (00034*)	luxuriant	golden yellow
<i>Salmonella Typhi</i> (ATCC 6539)	luxuriant	colourless
<i>Salmonella Typhimurium</i> (ATCC 14028) (00031*)	luxuriant	colourless

Flexi Plate photograph in actual size



**HiTouch™ HiCrome™ UTI Agar FlexiPlate™**

For presumptive identification of microorganisms mainly causing urinary tract infections

**FL043**

<b>Medium used :</b> HiTouch™ HiCrome™ UTI Agar	
<b>Composition **</b>	
Ingredients	Grams/Litre
Peptone, special	15.00
Chromogenic mixture	2.45
Agar	15.00

Final pH (at 25°C) 6.8 ± 0.2

\*\* Formula adjusted, standardized to suit performance parameters

**User Profile :**

- ▶ Clinical - Urine specimens
- ▶ Other industries where microbiological work is carried out

**Salient features :**

- ▶ For detection & identification of microorganisms causing urinary tract infections
- ▶ Specific chromogenic identification of pathogens
- ▶ Incubation temperature is 35-37°C
- ▶ Confirmed results within 18-24 hours

**Storage**

On receipt store between 2-8°C. Use before expiry date on the label.

**Quality Control**

**Appearance** : Sterile Plastic plate containing light amber coloured clear to slightly opalescent firm gel firm gel.

**Quantity of Medium** : 9 ml of gel in plastic plate.

**Reaction** : Reaction of the medium is pH 6.8 ± 0.2

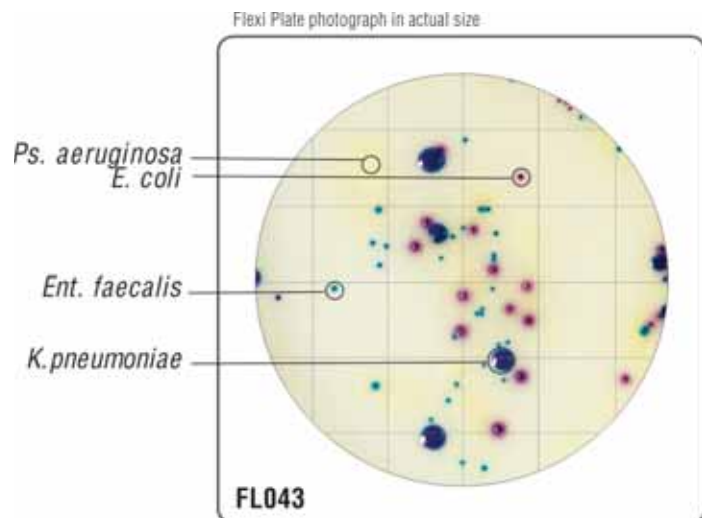
**Sterility Test**

: Sterility of the medium was checked for 14 days. Medium was found sterile without any colony formation on surface of solid medium.

**Cultural Response**

: Cultural Characteristics observed after an incubation at 35-37°C for 18-24 hours.

Organisms (ATCC) (WDCM*)	Growth	Colour of Colony
<i>Ent. faecalis</i> (ATCC 29212) (00087*)	luxuriant	blue, small
<i>E. coli</i> (ATCC 25922) (00013*)	inhibited	pink-purple
<i>Kleb. pneumoniae</i> (ATCC 13883) (00097*)	luxuriant	blue to purple, mucoid
<i>Pseudomonas aeruginosa</i> (ATCC 27853) (00025*)	luxuriant	colourless (greenish pigment may be observed)
<i>Proteus mirabilis</i> (ATCC 12453)	luxuriant	light brown
<i>Staphylococcus aureus</i> (ATCC 25923) (00034*)	luxuriant	golden yellow





**HiTouch™ SCDA w/ Polysorbate 80 & (20% of 1000 IU/litre) β lactamase mixture FlexiPlate™**  
a general purpose medium for cultivation of wide variety of organisms and for inactivation of penicillins, cephalosporins of first, second, third and fourth generation and penems.

**FL044**

<b>Medium used :</b> HiTouch™ SCDA w/ Polysorbate 80 & β lactamase mixture	
<b>Composition **</b>	
Ingredients	Grams/Litre
Tryptone	15.00
Soy peptone	5.00
Sodium chloride	5.00
Lecithin	0.70
Polysorbate 80 (Tween 80)	5.00
β lactamase mixture	200 IU
Agar	15.00

Final pH (at 25°C) 7.3 ± 0.2

\*\* Formula adjusted, standardized to suit performance parameters

**User Profile :**

- ▶ Pharmaceutical industry - Environmental Monitoring during aseptic production of β lactam antibiotics
- ▶ Other industries where microbiological work is carried out

**Salient features :**

- ▶ For enumeration of microorganisms which otherwise would get inhibited in routine agar medium
- ▶ Gives bacterial count of the environment analysed
- ▶ Incubation temperature is 35-37°C
- ▶ Confirmed results within 18-24 hours

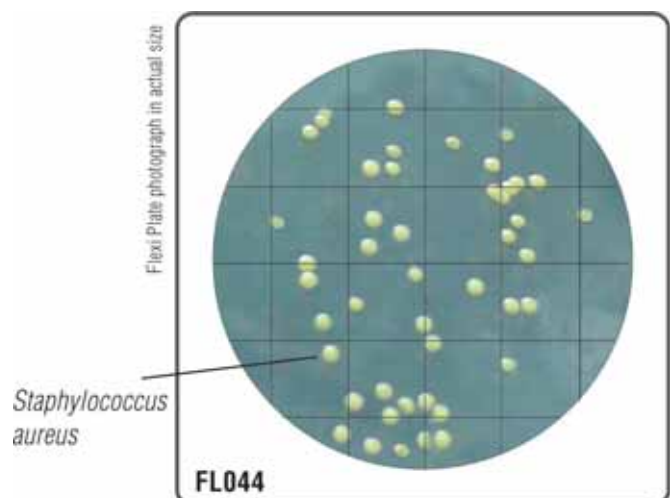
**Storage**

On receipt store between 2-8°C. Use before expiry date on the label.

**Quality Control**

- Appearance** : Sterile Plastic plate containing light yellow coloured clear to slightly opalescent firm gel firm gel
- Quantity of Medium** : 9 ml of gel in plastic plate.
- Reaction** : Reaction of the medium is pH 7.3 ± 0.2
- Sterility Test** : Sterility of the medium was checked for 14 days. Medium was found sterile without any colony formation on surface of solid medium.
- Cultural Response** : Cultural Characteristics observed after an incubation at 35-37°C for 18-24 hours.

Organisms (ATCC) (WDCM*)	Growth
<i>E.coli</i> (ATCC 25922) (00013*)	luxuriant
<i>Proteus mirabilis</i> (ATCC 25933)	luxuriant
<i>Ent.faecalis</i> (ATCC 29212) (00087*)	luxuriant
<i>S.aureus</i> (ATCC 25923) (00034*)	luxuriant
<i>S.aureus</i> (ATCC 29213)	luxuriant



## HiTouch™ Coliconfirm Agar FlexiPlate™

For selective isolation and identification of *E. coli* and coliforms from water samples.

**FL045**

Medium used : HiTouch™ Coliconfirm Agar

### Composition \*\*

Ingredients	Grams/Litre
Tryptone	8.00
Growth factors	2.20
Buffers	3.30
Chromogenic mixture	3.95
Selective mix	1.52
Agar	15.00

Final pH (at 25°C) 7.2 ± 0.2

\*\* Formula adjusted, standardized to suit performance parameters

### User Profile :

- ▶ Water : for detection of *E. coli* and coliform
- ▶ Other industries where microbiological work is carried out

### Salient features :

- ▶ For enumeration of microorganisms which otherwise would get inhibited in routine agar medium
- ▶ Gives bacterial count of the environment analysed
- ▶ Incubation temperature is 35-37°C
- ▶ Confirmed results within 18-24 hours

### Storage

On receipt store between 2-8°C. Use before expiry date on the label.

### Quality Control

- Appearance** : Sterile Plastic plate containing light blue coloured clear to slightly opalescent firm gel
- Quantity of Medium** : 9 ml of gel in plastic plate.
- Reaction** : Reaction of the medium is pH 7.2 ± 0.2

### Sterility Test

: Sterility of the medium was checked for 14 days. Medium was found sterile without any colony formation on surface of solid medium

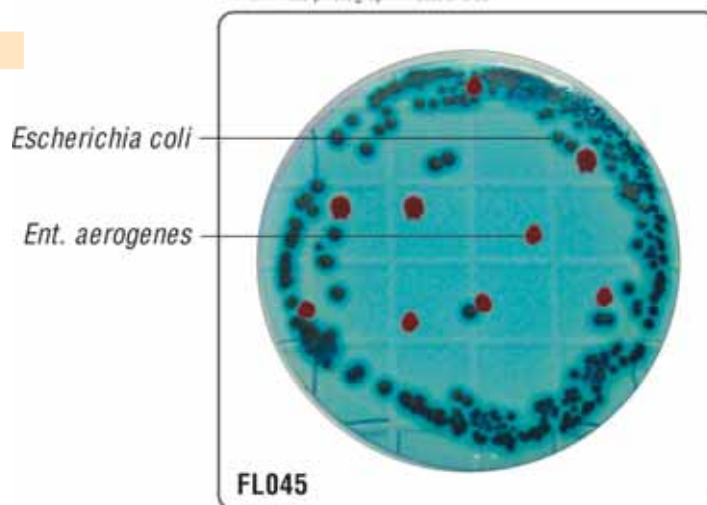
### Cultural Response

: Cultural Characteristics observed after an incubation at 35-37°C for 18-24 hours.

Organisms (ATCC) (WDCM*)	Growth	Colour of Colony
<i>E. coli</i> (ATCC 25922) (00013*)	luxuriant	blue
<i>Kleb. pneumoniae</i> (ATCC 13883) (00097*)	inhibited	maroon- red
# <i>Kleb. aerogenes</i> (ATCC 13048) (00175*)	luxuriant	maroon- red
<i>S. Enteritidis</i> (ATCC 13076) (00030*)	luxuriant	maroon- red
<i>S. aureus</i> (ATCC 25923) (00034*)	inhibited	-
<i>Ent. faecalis</i> (ATCC 29212) (00087*)	inhibited	-
<i>Aeromonas hydrophila</i> (ATCC 7966)	none-poor	-

# Formerly *Enterobacter aerogenes*

Flexi Plate photograph in actual size



HiTouch™ Aerobic Count FlexiPlate™	FL001	Page - 6	HiTouch™ Listeria Count FlexiPlate™	FL024	Page - 26
HiTouch™ E. coli / Coliform Count FlexiPlate™	FL002	Page - 7	HiTouch™ Enteric Pathogen Count FlexiPlate™	FL030	Page - 27
HiTouch™ Coliform Count FlexiPlate™	FL003	Page - 8	HiTouch™ HexaCrome FlexiPlate™	FL031	Page - 28
HiTouch™ High Sensitivity Coliform Count FlexiPlate™	FL004	Page - 9	HiTouch™ OGYE FlexiPlate™	FL032	Page - 29
HiTouch™ Rapid Coliform Count FlexiPlate™	FL005	Page - 10	HiTouch™ FlexiPlate™ M-TA	FL033	Page - 30
HiTouch™ Yeast and Mould Count FlexiPlate™	FL006	Page - 11	HiTouch™ FlexiPlate™ TJA	FL034	Page - 31
HiTouch™ Rapid <i>S. aureus</i> Count FlexiPlate™	FL007	Page - 12	HiTouch™ SCDA w/Polysorbate 80 & Lecithin FlexiPlate™	FL035	Page - 32
HiTouch™ Lactic Acid Count FlexiPlate™	FL008	Page - 13	HiTouch™ SCDA w/ Polysorbate 80 & Lecithin FlexiPlate™ ( $\gamma$ irradiated)	FL035G	Page - 33
HiTouch™ Environmental Testing FlexiPlate™	FL009	Page - 14	HiTouch™ SCDA w/ Polysorbate 80 & Lecithin FlexiPlate™ ( $\gamma$ irradiated) ( Triple Pack)	FL035GT	Page - 34
HiTouch™ Environmental Testing FlexiPlate™ ( $\gamma$ irradiated)	FL009G	Page - 15	HiTouch™ HiCrome™ <i>Ent. sakazakii</i> Agar FlexiPlate™	FL036	Page - 35
HiTouch™ Selective Yeast and Mould Count FlexiPlate™	FL010	Page - 16	HiTouch™ FlexiPlate™ - R2A	FL037	Page - 36
HiTouch™ FlexiPlate™ - SB	FL011	Page - 17	HiTouch™ SCDA w/ $\beta$ Lactamase FlexiPlate™	FL038	Page - 37
HiTouch™ FlexiPlate™ - VJ	FL012	Page - 18	HiTouch™ Sabouraud Dextrose Agar w/ LTHTh FlexiPlate™	FL039	Page - 38
HiTouch™ FlexiPlate™ - VR	FL013	Page - 19	HiTouch™ Sabouraud Dextrose Agar w/ LTHTh FlexiPlate™ ( $\gamma$ irradiated) (Triple Pack )	FL039GT	Page - 39
HiTouch™ FlexiPlate™ - CT	FL014	Page - 20	HiTouch™ Sabouraud Chloramphenicol Agar FlexiPlate™ ( $\gamma$ irradiated)	FL041G	Page - 40
HiTouch™ FlexiPlate™ - DA	FL015	Page - 21	HiTouch™ HiCrome™ Universal Agar FlexiPlate™	FL042	Page - 41
HiTouch™ FlexiPlate™ <i>Bacillus</i> Counts	FL016	Page - 22	HiTouch™ HiCrome™ UTI Agar FlexiPlate™	FL043	Page - 42
HiTouch™ FlexiPlate™ -Thermophilic <i>Bacillus</i>	FL017	Page - 23	HiTouch™ SCDA w/ Polysorbate 80 & (20% of 1000 IU/litre) $\beta$ lactamase mixture FlexiPlate™	FL044	Page - 43
HiTouch™ ECC Count FlexiPlate™	FL022	Page - 24	HiTouch™ Coliconfirm Agar FlexiPlate™	FL045	Page - 44
HiTouch™ <i>Salmonella</i> Count FlexiPlate™	FL023	Page - 25			

Packaging : Pack of 50  
plates of 55 mm dia, grid scored on base, sterile  
packed in individual plastic bags.

TM : Trade Mark Owned by HiMedia Laboratories Pvt. Limited  
All rights reserved © HiMedia Laboratories Pvt. Limited, 2015

# HiMedia Laboratories Pvt. Ltd.

www.himedialabs.com

## - CORPORATE OFFICE -

A-516, Swastik Disha Business Park, Via Vadhani Indl Est, LBS Marg,  
Mumbai - 400 086, India.

Tel : +91-22-6147 1919 / 2500 3747 | Fax : +91-22-6147 1920 / 2500 5764

Email : [info@himedialabs.com](mailto:info@himedialabs.com)

## - OVERSEAS OFFICES -

### USA & Canada

HiMedia Laboratories LLC, 107 W Dorothys Way, Lincoln University, West Chester,  
Pennsylvania 19352, USA.

Tel : +1-484-734-4401 | Fax : +1-484-734-4402

Email : [infous@himedialabs.com](mailto:infous@himedialabs.com)

### Europe

HiMedia Laboratories GmbH, Marie-Curie-Str. 3, 64683,  
Einhausen, Germany.

Tel : +49 6251 989 24 26 | Fax : +49 6251 989 24 27

Email : [infoeu@himedialabs.com](mailto:infoeu@himedialabs.com)



**HIMEDIA**®

For Life is Precious